

# BMPR2 Recombinant Matched Antibody Pair, PBS Only

Catalog Number: **MP01947-3**

## Capture Antibody Information

**Catalog Number:**  
85433-2-PBS  
**Host:**  
Rabbit  
**Isotype:**  
IgG  
**Purification Method:**  
Protein A purification

**Clone ID:**  
242826B12  
**Reactivity:**  
human  
**GenBank:**  
BC052985  
**Immunogen Catalog Number:**  
Ag5868

**Conjugate:**  
Unconjugated  
**Full name:**  
bone morphogenetic protein receptor, type II (serine/threonine kinase)  
**Gene ID:**  
659

## Detection Antibody Information

**Catalog Number:**  
85433-3-PBS  
**Host:**  
Rabbit  
**Isotype:**  
IgG  
**Purification Method:**  
Protein A purification

**Clone ID:**  
242826D3  
**Reactivity:**  
human  
**GenBank:**  
BC052985  
**Immunogen Catalog Number:**  
Ag5868

**Conjugate:**  
Unconjugated  
**Full name:**  
bone morphogenetic protein receptor, type II (serine/threonine kinase)  
**Gene ID:**  
659

## Applications

**Tested Applications:**  
Sandwich ELISA

**Range:**  
0.625-40 ng/mL (Sandwich ELISA)

**Recommended Dilutions:**  
It is recommended that this reagent should be titrated in each testing system to obtain optimal results.

## Product Information

MP01947-3 targets BMPR2 in immunoassays as a matched antibody pair. Validated in Sandwich ELISA.

Capture antibody: BMPR2 Recombinant antibody, PBS Only (Capture) 85433-2-PBS (242826B12). 100  $\mu$ g. Concentration 1 mg/mL.

Detection antibody: BMPR2 Recombinant antibody, PBS Only (Capture/Detector) 85433-3-PBS (242826D3). 100  $\mu$ g. Concentration 1 mg/mL.

Unconjugated rabbit recombinant monoclonal antibody pair in PBS only storage buffer at a concentration of 1 mg/mL, ready for conjugation. Created using Proteintech's proprietary in-house recombinant technology. Recombinant production enables unrivalled batch-to-batch consistency, easy scale-up, and future security of supply.

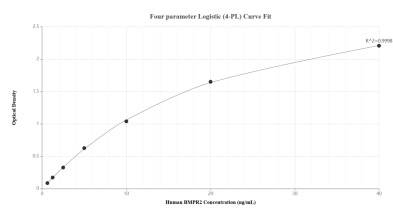
Matched antibody pairs are designed for use in a variety of assays and platforms that require matched antibody pairs.

Antibody use should be optimized for each application and assay.

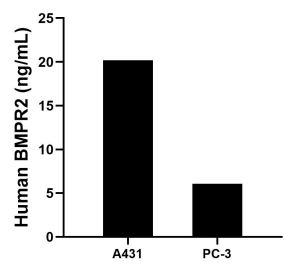
## Storage

**Storage:**  
Store at -80°C.  
**The product is shipped with ice packs. Upon receipt, store it immediately at -80°C**  
**Storage buffer:**  
PBS only

## Selected Validation Data



Sandwich ELISA standard curve of MP01947-3, Human BMPR2 Recombinant Matched Antibody Pair - PBS only. 85433-2-PBS was coated to a plate as the capture antibody and incubated with serial dilutions of standard Ag5868. 85433-3-PBS was HRP conjugated as the detection antibody. Range: 0.625-40 ng/mL



The mean BMPR2 concentration was determined to be 20.20 ng/mL in A431 cell extract based on a 2.70 mg/mL extract load and 6.06 ng/mL in PC-3 cell extract based on a 1.30 mg/mL extract load.