

GHR Recombinant Matched Antibody Pair, PBS Only

Catalog Number: **MP01942-3**

Capture Antibody Information

Catalog Number: 85437-5-PBS	Clone ID: 242896B7	Conjugate: Unconjugated
Host: Rabbit	Reactivity: human	Full name: GH binding protein
Isotype: IgG	GenBank: NM_000163.5	Gene ID: 2690
Purification Method: Protein A purification	Immunogen Catalog Number: Eg3027	

Detection Antibody Information

Catalog Number: 85437-4-PBS	Clone ID: 242896F3	Conjugate: Unconjugated
Host: Rabbit	Reactivity: human	Full name: GH binding protein
Isotype: IgG	GenBank: NM_000163.5	Gene ID: 2690
Purification Method: Protein A purification	Immunogen Catalog Number: Eg3027	

Applications

Tested Applications: Sandwich ELISA	Range: 78.1-5000 pg/mL (Sandwich ELISA)	Recommended Dilutions: It is recommended that this reagent should be titrated in each testing system to obtain optimal results.
---	---	---

Product Information

MP01942-3 targets GHR in immunoassays as a matched antibody pair. Validated in Sandwich ELISA.

Capture antibody: GHR Recombinant antibody, PBS Only (Capture) 85437-5-PBS (242896B7). 100 μ g. Concentration 1 mg/mL.

Detection antibody: GHR Recombinant antibody, PBS Only (Detector) 85437-4-PBS (242896F3). 100 μ g. Concentration 1 mg/mL.

Unconjugated rabbit recombinant monoclonal antibody pair in PBS only storage buffer at a concentration of 1 mg/mL, ready for conjugation. Created using Proteintech's proprietary in-house recombinant technology. Recombinant production enables unrivalled batch-to-batch consistency, easy scale-up, and future security of supply.

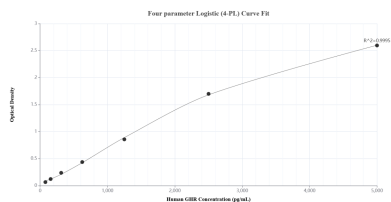
Matched antibody pairs are designed for use in a variety of assays and platforms that require matched antibody pairs.

Antibody use should be optimized for each application and assay.

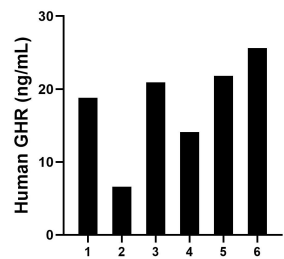
Storage

Storage:
Store at -80°C.
The product is shipped with ice packs. Upon receipt, store it immediately at -80°C
Storage buffer:
PBS only

Selected Validation Data



Sandwich ELISA standard curve of MP01942-3, Human GHR Recombinant Matched Antibody Pair - PBS only. 85437-5-PBS was coated to a plate as the capture antibody and incubated with serial dilutions of standard Eg3027. 85437-4-PBS was HRP conjugated as the detection antibody. Range: 78.1-5000 pg/mL.



Serum of six individual healthy human donors was measured. The GHR concentration of detected samples was determined to be 18.0 ng/mL with a range of 6.6-25.6 ng/mL.