

RIOK3 Recombinant Matched Antibody Pair, PBS Only

Catalog Number: **MP01940-2**

Capture Antibody Information

Catalog Number: 85449-3-PBS	Clone ID: 242996F11	Conjugate: Unconjugated
Host: Rabbit	Reactivity: human	Full name: RIO kinase 3 (yeast)
Isotype: IgG	GenBank: BC039729	Gene ID: 8780
Purification Method: Protein A purification	Immunogen Catalog Number: Ag4497	

Detection Antibody Information

Catalog Number: 85449-2-PBS	Clone ID: 242996E11	Conjugate: Unconjugated
Host: Rabbit	Reactivity: human	Full name: RIO kinase 3 (yeast)
Isotype: IgG	GenBank: BC039729	Gene ID: 8780
Purification Method: Protein A purification	Immunogen Catalog Number: Ag4497	

Applications

Tested Applications: Cytometric bead array, Sandwich ELISA	Range: 0.781-100 ng/mL (Cytometric Bead Array) 97.7-6250 pg/mL (Sandwich ELISA)	Recommended Dilutions: It is recommended that this reagent should be titrated in each testing system to obtain optimal results.
--	--	---

Product Information

MP01940-2 targets RIOK3 in immunoassays as a matched antibody pair. Validated in Cytometric bead array, Sandwich ELISA.

Capture antibody: RIOK3 Recombinant antibody, PBS Only (Capture) 85449-3-PBS (242996F11). 100 µg. Concentration 1 mg/mL.

Detection antibody: RIOK3 Recombinant antibody, PBS Only (Detector) 85449-2-PBS (242996E11). 100 µg. Concentration 1 mg/mL.

Unconjugated rabbit recombinant monoclonal antibody pair in PBS only storage buffer at a concentration of 1 mg/mL, ready for conjugation. Created using Proteintech's proprietary in-house recombinant technology. Recombinant production enables unrivalled batch-to-batch consistency, easy scale-up, and future security of supply.

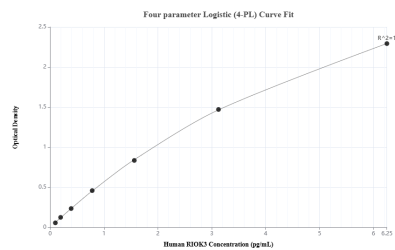
Matched antibody pairs are designed for use in a variety of assays and platforms that require matched antibody pairs.

Antibody use should be optimized for each application and assay.

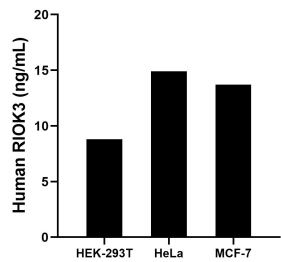
Storage

Storage:
Store at -80°C.
The product is shipped with ice packs. Upon receipt, store it immediately at -80°C
Storage buffer:
PBS only

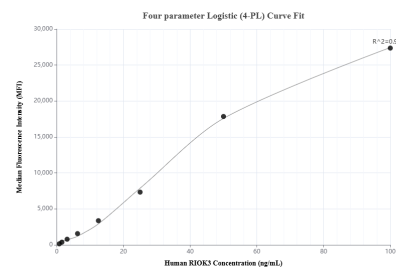
Selected Validation Data



Sandwich ELISA standard curve of MP01940-2, Human R1OK3 Recombinant Matched Antibody Pair - PBS only. 85449-3-PBS was coated to a plate as the capture antibody and incubated with serial dilutions of standard Ag4497. 85449-2-PBS was HRP conjugated as the detection antibody. Range: 97.7-6250 pg/mL



The mean R1OK3 concentration was determined to be 8.12 ng/mL in HEK-293T cell extract based on a 3.2 mg/mL extract load, 14.92 ng/mL in HeLa cell extract based on a 2.1 mg/mL extract load and 13.7 ng/mL in MCF-7 cell extract based on a 1.3 mg/mL extract load.



Cytometric bead array standard curve of MP01940-2, R1OK3 Recombinant Matched Antibody Pair, PBS Only. Capture antibody: 85449-3-PBS. Detection antibody: 85449-2-PBS. Standard: Ag4497. Range: 0.781-100 ng/mL