

Cytochrome c Recombinant Matched Antibody Pair, PBS Only

Catalog Number: **MP01934-3**

Capture Antibody Information

Catalog Number: 83276-5-PBS	Clone ID: 230503G9	Conjugate: Unconjugated
Host: Rabbit	Reactivity: human	Full name: cytochrome c, somatic
Isotype: IgG	GenBank: BC009578	Gene ID: 54205
Purification Method: Protein A purification	Immunogen Catalog Number: Ag1455	

Detection Antibody Information

Catalog Number: 83276-6-PBS	Clone ID: 230503C12	Conjugate: Unconjugated
Host: Rabbit	Reactivity: human	Full name: cytochrome c, somatic
Isotype: IgG	GenBank: BC009578	Gene ID: 54205
Purification Method: Protein A purification	Immunogen Catalog Number: Ag1455	

Applications

Tested Applications: Sandwich ELISA	Range: 0.391-25 ng/mL (Sandwich ELISA)	Recommended Dilutions: It is recommended that this reagent should be titrated in each testing system to obtain optimal results.
---	--	---

Product Information

MP01934-3 targets Cytochrome c in immunoassays as a matched antibody pair. Validated in Sandwich ELISA.

Capture antibody: Cytochrome c Recombinant antibody, PBS Only (Capture/Detector) 83276-5-PBS (230503G9). 100 µg. Concentration 1 mg/mL.

Detection antibody: Cytochrome c Recombinant antibody, PBS Only (Detector) 83276-6-PBS (230503C12). 100 µg. Concentration 1 mg/mL.

Unconjugated rabbit recombinant monoclonal antibody pair in PBS only storage buffer at a concentration of 1 mg/mL, ready for conjugation. Created using Proteintech's proprietary in-house recombinant technology. Recombinant production enables unrivalled batch-to-batch consistency, easy scale-up, and future security of supply.

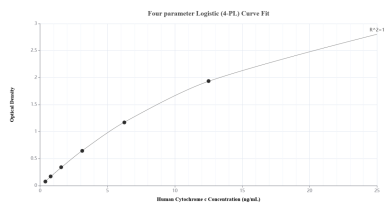
Matched antibody pairs are designed for use in a variety of assays and platforms that require matched antibody pairs.

Antibody use should be optimized for each application and assay.

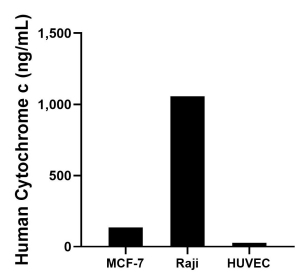
Storage

Storage:
Store at -80°C.
The product is shipped with ice packs. Upon receipt, store it immediately at -80°C
Storage buffer:
PBS only

Selected Validation Data



Sandwich ELISA standard curve of MP01934-3, Human Cytochrome c Recombinant Matched Antibody Pair - PBS only. 83276-5-PBS was coated to a plate as the capture antibody and incubated with serial dilutions of standard Ag1455. 83276-6-PBS was HRP conjugated as the detection antibody. Range: 0.391-25 ng/mL



The mean Cytochrome c concentration was determined to be 135.89 ng/mL in MCF-7 cell extract based on a 1.30 mg/mL extract load, 1,056.51 ng/mL in Raji cell extract based on a 3.00 mg/mL extract load and 26.74 ng/mL in HUVEC cell extract based on a 1.40 mg/mL extract load.