

GATA3 Recombinant Matched Antibody Pair, PBS Only

Catalog Number: **MP01933-1**

Capture Antibody Information

Catalog Number: 83808-1-PBS	Clone ID: 240684A2	Conjugate: Unconjugated
Host: Rabbit	Reactivity: human, mouse	Full name: GATA binding protein 3
Isotype: IgG	GenBank: BC003070	Gene ID: 2625
Purification Method: Protein A purification	Immunogen Catalog Number: Ag0174	

Detection Antibody Information

Catalog Number: 83808-4-PBS	Clone ID: 240684F5	Conjugate: Unconjugated
Host: Rabbit	Reactivity: human	Full name: GATA binding protein 3
Isotype: IgG	GenBank: BC003070	Gene ID: 2625
Purification Method: Protein A purification	Immunogen Catalog Number: Ag0174	

Applications

Tested Applications: Cytometric bead array, Sandwich ELISA	Range: 0.781-100 ng/mL (Cytometric Bead Array) 0.156-10 ng/mL (Sandwich ELISA)	Recommended Dilutions: It is recommended that this reagent should be titrated in each testing system to obtain optimal results.
---	--	--

Product Information

MP01933-1 targets GATA3 in immunoassays as a matched antibody pair. Validated in Cytometric bead array, Sandwich ELISA.

Capture antibody: GATA3 Recombinant antibody, PBS Only (Capture) 83808-1-PBS (240684A2). 100 µg. Concentration 1 mg/mL.

Detection antibody: GATA3 Recombinant antibody, PBS Only (Capture/Detector) 83808-4-PBS (240684F5). 100 µg. Concentration 1 mg/mL.

Unconjugated rabbit recombinant monoclonal antibody pair in PBS only storage buffer at a concentration of 1 mg/mL, ready for conjugation. Created using Proteintech's proprietary in-house recombinant technology. Recombinant production enables unrivalled batch-to-batch consistency, easy scale-up, and future security of supply.

Matched antibody pairs are designed for use in a variety of assays and platforms that require matched antibody pairs.

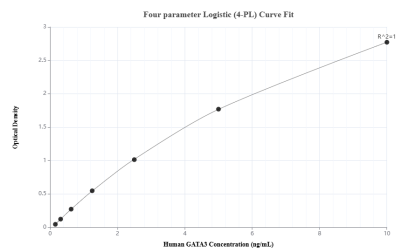
Antibody use should be optimized for each application and assay.

Storage

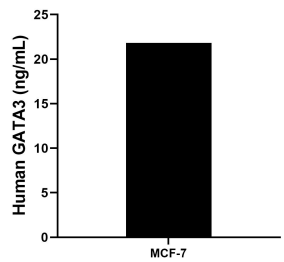
Storage:
Store at -80°C.
The product is shipped with ice packs. Upon receipt, store it immediately at -80°C

Storage buffer:
PBS only

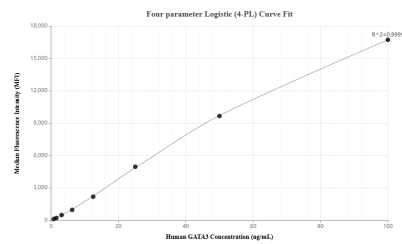
Selected Validation Data



Sandwich ELISA standard curve of MP01933-1, Human GATA3 Recombinant Matched Antibody Pair - PBS only. 83808-1-PBS was coated to a plate as the capture antibody and incubated with serial dilutions of standard Ag0174. 83808-4-PBS was HRP conjugated as the detection antibody. Range: 0.156-10 ng/mL



The mean GATA3 concentration was determined to be 21.82 ng/mL in MCF-7 cell extract based on a 1.3 mg/mL extract load.



Cytometric bead array standard curve of MP01933-1, GATA3 Recombinant Matched Antibody Pair, PBS Only. Capture antibody: 83808-1-PBS. Detection antibody: 83808-4-PBS. Standard: Ag0174. Range: 0.781-100 ng/mL