

CLYBL Recombinant Matched Antibody Pair, PBS Only

Catalog Number: **MP01930-3**

Capture Antibody Information

Catalog Number: 85399-5-PBS	Clone ID: 242785G2	Conjugate: Unconjugated
Host: Rabbit	Reactivity: human	Full name: citrate lyase beta like
Isotype: IgG	GenBank: BC034360	Gene ID: 171425
Purification Method: Protein A purification	Immunogen Catalog Number: Ag11283	

Detection Antibody Information

Catalog Number: 85399-3-PBS	Clone ID: 242785G1	Conjugate: Unconjugated
Host: Rabbit	Reactivity: human	Full name: citrate lyase beta like
Isotype: IgG	GenBank: BC034360	Gene ID: 171425
Purification Method: Protein A purification	Immunogen Catalog Number: Ag11283	

Applications

Tested Applications: Sandwich ELISA	Range: 0.781-50 ng/mL (Sandwich ELISA)	Recommended Dilutions: It is recommended that this reagent should be titrated in each testing system to obtain optimal results.
--	---	--

Product Information

MP01930-3 targets CLYBL in immunoassays as a matched antibody pair. Validated in Sandwich ELISA.

Capture antibody: CLYBL Recombinant antibody, PBS Only (Capture) 85399-5-PBS (242785G2). 100 µg. Concentration 1 mg/mL.

Detection antibody: CLYBL Recombinant antibody, PBS Only (Detector) 85399-3-PBS (242785G1). 100 µg. Concentration 1 mg/mL.

Unconjugated rabbit recombinant monoclonal antibody pair in PBS only storage buffer at a concentration of 1 mg/mL, ready for conjugation. Created using Proteintech's proprietary in-house recombinant technology. Recombinant production enables unrivalled batch-to-batch consistency, easy scale-up, and future security of supply.

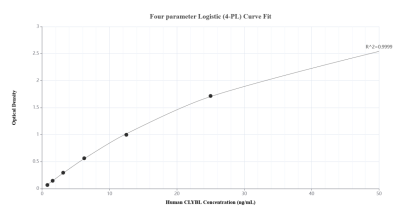
Matched antibody pairs are designed for use in a variety of assays and platforms that require matched antibody pairs.

Antibody use should be optimized for each application and assay.

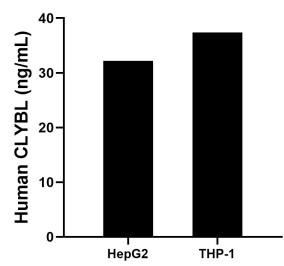
Storage

Storage:
Store at -80°C.
The product is shipped with ice packs. Upon receipt, store it immediately at -80°C
Storage buffer:
PBS only

Selected Validation Data



Sandwich ELISA standard curve of MP01930-3, Human CLYBL Recombinant Matched Antibody Pair - PBS only. 85399-5-PBS was coated to a plate as the capture antibody and incubated with serial dilutions of standard Ag11283. 85399-3-PBS was HRP conjugated as the detection antibody. Range: 0.781-50 ng/mL.



The mean CLYBL concentration was determined to be 32.18 ng/mL in HepG2 cell extract based on a 1.80 mg/mL extract load and 37.35 ng/mL in THP-1 cell extract based on a 1.50 mg/mL extract load.