

Cystatin SN/CST1 Recombinant Matched Antibody Pair, PBS Only

Catalog Number: **MP01926-3**

Capture Antibody Information

Catalog Number: 85403-4-PBS	Clone ID: 242888G4	Conjugate: Unconjugated
Host: Rabbit	Reactivity: human	Full name: cystatin SN
Isotype: IgG	GenBank: BC021225	Gene ID: 1469
Purification Method: Protein A purification	Immunogen Catalog Number: Ag8862	

Detection Antibody Information

Catalog Number: 85403-1-PBS	Clone ID: 242888B3	Conjugate: Unconjugated
Host: Rabbit	Reactivity: human	Full name: cystatin SN
Isotype: IgG	GenBank: BC021225	Gene ID: 1469
Purification Method: Protein A purification	Immunogen Catalog Number: Ag8862	

Applications

Tested Applications: Sandwich ELISA	Range: 1.56-10 ng/mL (Sandwich ELISA)	Recommended Dilutions: It is recommended that this reagent should be titrated in each testing system to obtain optimal results.
---	---	---

Product Information

MP01926-3 targets Cystatin SN/CST1 in immunoassays as a matched antibody pair. Validated in Sandwich ELISA.

Capture antibody: CST1 Recombinant antibody, PBS Only (Capture) 85403-4-PBS (242888G4). 100 µg. Concentration 1 mg/mL.

Detection antibody: Cystatin SN/CST1 Recombinant antibody, PBS Only (Capture/Detector) 85403-1-PBS (242888B3). 100 µg. Concentration 1 mg/mL.

Unconjugated rabbit recombinant monoclonal antibody pair in PBS only storage buffer at a concentration of 1 mg/mL, ready for conjugation. Created using Proteintech's proprietary in-house recombinant technology. Recombinant production enables unrivalled batch-to-batch consistency, easy scale-up, and future security of supply.

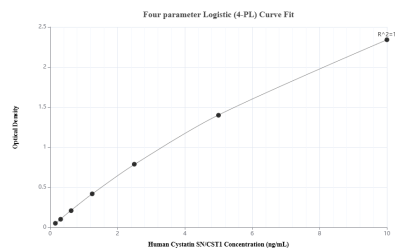
Matched antibody pairs are designed for use in a variety of assays and platforms that require matched antibody pairs.

Antibody use should be optimized for each application and assay.

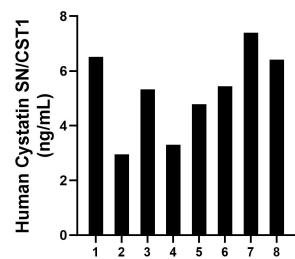
Storage

Storage:
Store at -80°C.
The product is shipped with ice packs. Upon receipt, store it immediately at -80°C
Storage buffer:
PBS only

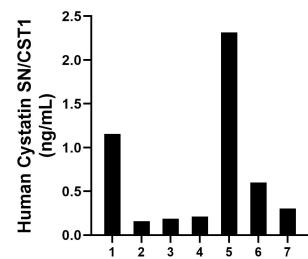
Selected Validation Data



Sandwich ELISA standard curve of MP01926-3, Human Cystatin SN/CST1 Recombinant Matched Antibody Pair - PBS only. 85403-4-PBS was coated to a plate as the capture antibody and incubated with serial dilutions of standard Ag8862. 85403-1-PBS was HRP conjugated as the detection antibody. Range: 1.56-10 ng/mL



Serum of eight individual healthy human donors was measured. The human Cystatin SN/CST1 concentration of detected samples was determined to be 5.27 ng/mL with a range of 2.95 - 7.40 ng/mL



Urine of seven individual healthy human donors was measured. The human Cystatin SN/CST1 concentration of detected samples was determined to be 0.70 ng/mL with a range of 0.16 - 2.31 ng/mL