

For Research Use Only

IBA1 Recombinant Matched Antibody Pair, PBS Only



Catalog Number:MP01922-2

Capture Antibody Information

Catalog Number:
81728-2-PBS
Host:
Rabbit
Isotype:
IgG
Purification Method:
Protein A purification

Clone ID:
242712C7
Reactivity:
human
GenBank:
BC009474
Immunogen Catalog Number:
Ag1363

Conjugate:
Unconjugated
Full name:
allograft inflammatory factor 1
Gene ID:
199

Detection Antibody Information

Catalog Number:
81728-5-PBS
Host:
Rabbit
Isotype:
IgG
Purification Method:
Protein A purification

Clone ID:
242712D4
Reactivity:
human
GenBank:
BC009474
Immunogen Catalog Number:
Ag1363

Conjugate:
Unconjugated
Full name:
allograft inflammatory factor 1
Gene ID:
199

Applications

Tested Applications:
Sandwich ELISA

Range:
3.91-250 ng/mL (Sandwich ELISA)

Recommended Dilutions:
It is recommended that this reagent should be titrated in each testing system to obtain optimal results.

Product Information

MP01922-2 targets IBA1 in immunoassays as a matched antibody pair. Validated in Sandwich ELISA.

Capture antibody: IBA1 Recombinant monoclonal antibody, PBS Only (Capture/Detector) 81728-2-PBS (242712C7). 100 µg. Concentration 1 mg/mL.

Detection antibody: IBA1 Recombinant monoclonal antibody, PBS Only (Detector) 81728-5-PBS (242712D4). 100 µg. Concentration 1 mg/mL.

Unconjugated rabbit recombinant monoclonal antibody pair in PBS only storage buffer at a concentration of 1 mg/mL, ready for conjugation. Created using Proteintech's proprietary in-house recombinant technology. Recombinant production enables unrivalled batch-to-batch consistency, easy scale-up, and future security of supply.

Matched antibody pairs are designed for use in a variety of assays and platforms that require matched antibody pairs.

Antibody use should be optimized for each application and assay.

Storage

Storage:
Store at -80°C.
The product is shipped with ice packs. Upon receipt, store it immediately at -80°C
Storage buffer:
PBS only

For technical support and original validation data for this product please contact:

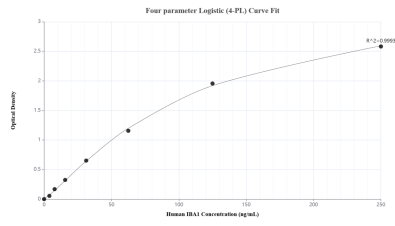
T: 4006900926

E: Proteintech-CN@ptglab.com

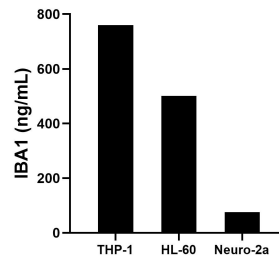
W: ptgcn.com

This product is exclusively available under Proteintech Group brand and is not available to purchase from any other manufacturer.

Selected Validation Data



Sandwich ELISA standard curve of MP01922-2, Human IBA1 Recombinant Matched Antibody Pair - PBS only. 81728-2-PBS was coated to a plate as the capture antibody and incubated with serial dilutions of standard Ag1363. 81728-5-PBS was HRP conjugated as the detection antibody. Range: 3.91-250 ng/mL



The mean IBA1 concentration was determined to be 759.57 ng/mL in THP-1 cell extract based on a 1.20 mg/mL extract load, 500.30 ng/mL in HL-60 cell extract based on a 1.20 mg/mL extract load and 75.14 ng/mL in Neuro-2a cell extract based on a 1.20 mg/mL extract load.