

ULBP2 Recombinant Matched Antibody Pair, PBS Only

Catalog Number: **MP01920-2**

Capture Antibody Information

Catalog Number:

83709-4-PBS

Host:

Rabbit

Isotype:

IgG

Purification Method:

Protein A purification

Clone ID:

240413H4

Reactivity:

human

GenBank:

NM_025217.4

Conjugate:

Unconjugated

Full name:

UL16 binding protein 2

Gene ID:

80328

Detection Antibody Information

Catalog Number:

83709-3-PBS

Host:

Rabbit

Isotype:

IgG

Purification Method:

Protein A purification

Clone ID:

240413F7

Reactivity:

human

GenBank:

NM_025217.4

Conjugate:

Unconjugated

Full name:

UL16 binding protein 2

Gene ID:

80328

Applications

Tested Applications:

Cytometric bead array, Sandwich ELISA

Range:

0.781-100 ng/mL (Cytometric Bead Array)
0.156-10 ng/mL (Sandwich ELISA)

Recommended Dilutions:

It is recommended that this reagent should be titrated in each testing system to obtain optimal results.

Product Information

MP01920-2 targets ULBP2 in immunoassays as a matched antibody pair. Validated in Cytometric bead array, Sandwich ELISA.

Capture antibody: ULBP2 Recombinant antibody, PBS Only (Capture/Detector) 83709-4-PBS (240413H4). 100 µg. Concentration 1 mg/mL.

Detection antibody: ULBP2 Recombinant antibody, PBS Only (Detector) 83709-3-PBS (240413F7). 100 µg. Concentration 1 mg/mL.

Unconjugated rabbit recombinant monoclonal antibody pair in PBS only storage buffer at a concentration of 1 mg/mL, ready for conjugation. Created using Proteintech's proprietary in-house recombinant technology. Recombinant production enables unrivalled batch-to-batch consistency, easy scale-up, and future security of supply.

Matched antibody pairs are designed for use in a variety of assays and platforms that require matched antibody pairs.

Antibody use should be optimized for each application and assay.

Storage

Storage:

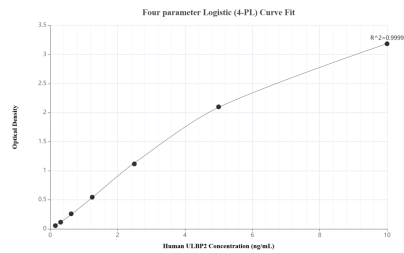
Store at -80°C.

The product is shipped with ice packs. Upon receipt, store it immediately at -80°C

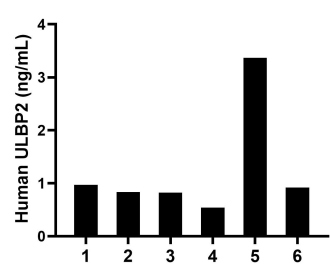
Storage buffer:

PBS only

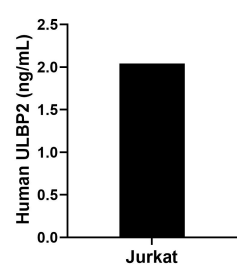
Selected Validation Data



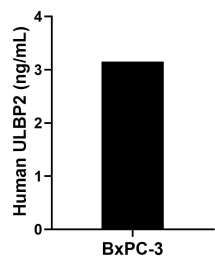
Sandwich ELISA standard curve of MP01920-2, Human ULBP2 Recombinant Matched Antibody Pair - PBS only. 83709-4-PBS was coated to a plate as the capture antibody and incubated with serial dilutions of standard Eg0858. 83709-3-PBS was HRP conjugated as the detection antibody. Range: 0.156-10 ng/mL



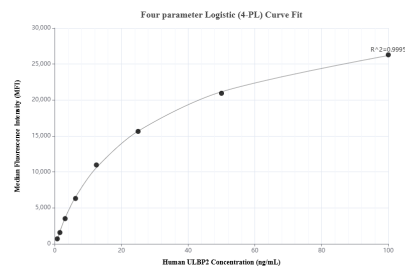
Serum of six individual healthy human donors was measured. The ULBP2 concentration of detected samples was determined to be 1.24 ng/mL with a range of 0.54-3.37 ng/mL.



Jurkat were cultured in DMEM supplemented with 10% fetal bovine serum, 2.5 mM L-glutamine, 100 U/mL penicillin, and 100 μ g/mL streptomycin sulfate. An aliquot of the cell culture supernate was removed, assayed for human ULBP2, and measured 2.04 ng/mL



The mean ULBP2 concentration was determined to be 3.15 ng/mL in BxPC-3 cell extract based on a 2.00 mg/mL extract load.



Cytometric bead array standard curve of MP01920-2, ULBP2 Recombinant Matched Antibody Pair, PBS Only. Capture antibody: 83709-4-PBS. Detection antibody: 83709-3-PBS. Standard: Eg0858. Range: 0.781-100 ng/mL