

Plakophilin 1 Recombinant Matched Antibody Pair, PBS Only

Catalog Number: MP01918-1

Capture Antibody Information

Catalog Number:
85217-1-PBS

Host:
Rabbit

Isotype:
IgG

Purification Method:
Protein A purification

Clone ID:
242834C12

Reactivity:
human

GenBank:
BC114571

Immunogen Catalog Number:
Ag18153

Conjugate:
Unconjugated

Full name:
plakophilin 1 (ectodermal dysplasia/skin fragility syndrome)

Gene ID:
5317

Detection Antibody Information

Catalog Number:
85217-2-PBS

Host:
Rabbit

Isotype:
IgG

Purification Method:
Protein A purification

Clone ID:
242834C7

Reactivity:
human

GenBank:
BC114571

Immunogen Catalog Number:
Ag18153

Conjugate:
Unconjugated

Full name:
plakophilin 1 (ectodermal dysplasia/skin fragility syndrome)

Gene ID:
5317

Applications

Tested Applications:
Cytometric bead array, Sandwich ELISA

Range:
0.781-100 ng/mL (Cytometric Bead Array)
39.1-2500 pg/mL (Sandwich ELISA)

Recommended Dilutions:
It is recommended that this reagent should be titrated in each testing system to obtain optimal results.

Product Information

MP01918-1 targets Plakophilin 1 in immunoassays as a matched antibody pair. Validated in Cytometric bead array, Sandwich ELISA.

Capture antibody: Plakophilin 1 Recombinant antibody, PBS Only (Capture) 85217-1-PBS (242834C12). 100 µg. Concentration 1 mg/mL.

Detection antibody: Plakophilin 1 Recombinant antibody, PBS Only (Detector) 85217-2-PBS (242834C7). 100 µg. Concentration 1 mg/mL.

Unconjugated rabbit recombinant monoclonal antibody pair in PBS only storage buffer at a concentration of 1 mg/mL, ready for conjugation. Created using Proteintech's proprietary in-house recombinant technology. Recombinant production enables unrivalled batch-to-batch consistency, easy scale-up, and future security of supply.

Matched antibody pairs are designed for use in a variety of assays and platforms that require matched antibody pairs.

Antibody use should be optimized for each application and assay.

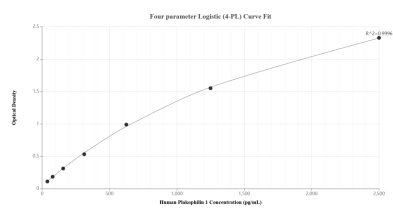
Storage

Storage:
Store at -80°C.

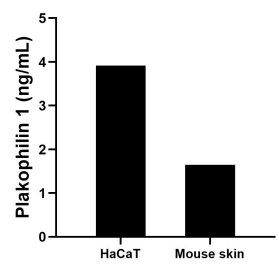
The product is shipped with ice packs. Upon receipt, store it immediately at -80°C

Storage buffer:
PBS only

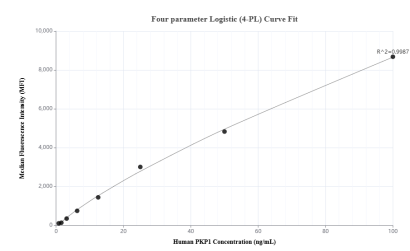
Selected Validation Data



Sandwich ELISA standard curve of MP01918-1, Human Plakophilin 1 Recombinant Matched Antibody Pair - PBS only. 85217-1-PBS was coated to a plate as the capture antibody and incubated with serial dilutions of standard Ag18153. 85217-2-PBS was HRP conjugated as the detection antibody. Range: 39.1-2500 pg/mL



The mean Plakophilin 1 concentration was determined to be 3.9 ng/mL in HaCaT cell extract based on a 1.0 mg/mL extract load and 1.7 ng/mL in mouse skin tissue extract based on a 0.9 mg/mL extract load.



Cytometric bead array standard curve of MP01918-1, PKP1/Plakophilin 1 Recombinant Matched Antibody Pair, PBS Only. Capture antibody: 85217-1-PBS. Detection antibody: 85217-2-PBS. Standard: Ag18153. Range: 0.781-100 ng/mL