

Rat MMP8 Recombinant Matched Antibody Pair, PBS Only

Catalog Number: **MP01911-3**

Capture Antibody Information

Catalog Number:
85211-6-PBS
Host:
Rabbit
Isotype:
IgG
Purification Method:
Protein A purification

Clone ID:
242473F6
Reactivity:
rat
GenBank:
NM_022221.1

Conjugate:
Unconjugated
Full name:
matrix metalloproteinase 8
Gene ID:
63849

Detection Antibody Information

Catalog Number:
85211-5-PBS
Host:
Rabbit
Isotype:
IgG
Purification Method:
Protein A purification

Clone ID:
242473D1
Reactivity:
rat
GenBank:
NM_022221.1

Conjugate:
Unconjugated
Full name:
matrix metalloproteinase 8
Gene ID:
63849

Applications

Tested Applications:
Sandwich ELISA

Range:
39.1-2500 pg/mL (Sandwich ELISA)

Recommended Dilutions:
It is recommended that this reagent should be titrated in each testing system to obtain optimal results.

Product Information

MP01911-3 targets MMP8 in immunoassays as a matched antibody pair. Validated in Sandwich ELISA.

Capture antibody: Rat MMP8 Recombinant antibody, PBS Only (Capture) 85211-6-PBS (242473F6). 100 µg. Concentration 1 mg/mL.

Detection antibody: Rat MMP8 Recombinant antibody, PBS Only (Detector) 85211-5-PBS (242473D1). 100 µg. Concentration 1 mg/mL.

Unconjugated rabbit recombinant monoclonal antibody pair in PBS only storage buffer at a concentration of 1 mg/mL, ready for conjugation. Created using Proteintech's proprietary in-house recombinant technology. Recombinant production enables unrivalled batch-to-batch consistency, easy scale-up, and future security of supply.

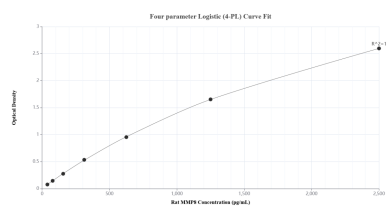
Matched antibody pairs are designed for use in a variety of assays and platforms that require matched antibody pairs.

Antibody use should be optimized for each application and assay.

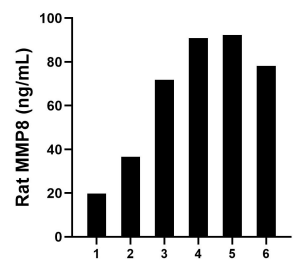
Storage

Storage:
Store at -80°C.
The product is shipped with ice packs. Upon receipt, store it immediately at -80°C
Storage buffer:
PBS only

Selected Validation Data



Sandwich ELISA standard curve of MP01911-3, Rat MMP8 Recombinant Matched Antibody Pair - PBS only. 85211-6-PBS was coated to a plate as the capture antibody and incubated with serial dilutions of standard Eg3278. 85211-5-PBS was HRP conjugated as the detection antibody. Range: 39.1-2500 pg/mL.



Serum of six rats was measured. The MMP8 concentration of detected samples was determined to be 65.0 ng/mL with a range of 19.8-92.4 ng/mL.