

PARP1 Recombinant Matched Antibody Pair, PBS Only

Catalog Number: **MP01904-1**

Capture Antibody Information

Catalog Number:

85175-1-PBS

Host:

Rabbit

Isotype:

IgG

Purification Method:

Protein A purification

Clone ID:

242461B10

Reactivity:

human

GenBank:

BC037545

Conjugate:

Unconjugated

Full name:

poly (ADP-ribose) polymerase 1

Gene ID:

142

Detection Antibody Information

Catalog Number:

85175-2-PBS

Host:

Rabbit

Isotype:

IgG

Purification Method:

Protein A purification

Clone ID:

242461C12

Reactivity:

human

GenBank:

BC037545

Conjugate:

Unconjugated

Full name:

poly (ADP-ribose) polymerase 1

Gene ID:

142

Applications

Tested Applications:

Sandwich ELISA

Range:

0.156-10 ng/mL (Sandwich ELISA)

Recommended Dilutions:

It is recommended that this reagent should be titrated in each testing system to obtain optimal results.

Product Information

MP01904-1 targets PARP1 in immunoassays as a matched antibody pair. Validated in Sandwich ELISA.

Capture antibody: PARP1- Cleaved (Asp214) 1 Recombinant antibody, PBS Only (Capture) 85175-1-PBS (242461B10). 100 µg. Concentration 1 mg/mL.

Detection antibody: PARP1- Cleaved (Asp214) 1 Recombinant antibody, PBS Only (Detector) 85175-2-PBS (242461C12). 100 µg. Concentration 1 mg/mL.

Unconjugated rabbit recombinant monoclonal antibody pair in PBS only storage buffer at a concentration of 1 mg/mL, ready for conjugation. Created using Proteintech's proprietary in-house recombinant technology. Recombinant production enables unrivalled batch-to-batch consistency, easy scale-up, and future security of supply.

Matched antibody pairs are designed for use in a variety of assays and platforms that require matched antibody pairs.

Antibody use should be optimized for each application and assay.

Storage

Storage:

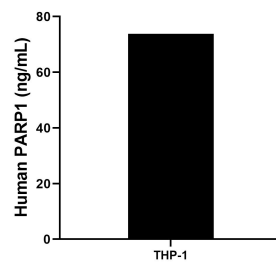
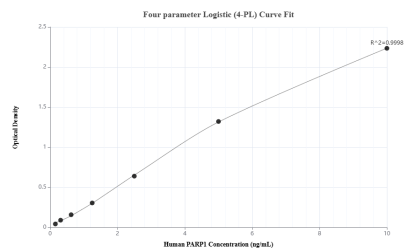
Store at -80°C.

The product is shipped with ice packs. Upon receipt, store it immediately at -80°C

Storage buffer:

PBS only

Selected Validation Data



Sandwich ELISA standard curve of MP01904-1, Human PARP1 Recombinant Matched Antibody Pair - PBS only. 85175-1-PBS was coated to a plate as the capture antibody and incubated with serial dilutions of standard SY02434. 85175-2-PBS was HRP conjugated as the detection antibody. Range: 0.156-10 ng/mL

The mean PARP1 concentration was determined to be 73.75 ng/mL in THP-1 cell extract based on a 4.4 mg/mL extract load.