

TAL1 Recombinant Matched Antibody Pair, PBS Only

Catalog Number: **MP01902-1**

Capture Antibody Information

Catalog Number:
85174-2-PBS
Host:
Rabbit
Isotype:
IgG
Purification Method:
Protein A purification

Clone ID:
242377B5
Reactivity:
human
GenBank:
NM_003189

Conjugate:
Unconjugated
Full name:
T-cell acute lymphocytic leukemia 1
Gene ID:
6886

Detection Antibody Information

Catalog Number:
85174-1-PBS
Host:
Rabbit
Isotype:
IgG
Purification Method:
Protein A purification

Clone ID:
242377B4
Reactivity:
human
GenBank:
NM_003189

Conjugate:
Unconjugated
Full name:
T-cell acute lymphocytic leukemia 1
Gene ID:
6886

Applications

Tested Applications:
Sandwich ELISA

Range:
0.156-10 ng/mL (Sandwich ELISA)

Recommended Dilutions:
It is recommended that this reagent should be titrated in each testing system to obtain optimal results.

Product Information

MP01902-1 targets TAL1 in immunoassays as a matched antibody pair. Validated in Sandwich ELISA.

Capture antibody: TAL1 Recombinant antibody, PBS Only (Capture) 85174-2-PBS (242377B5). 100 µg. Concentration 1 mg/mL.

Detection antibody: TAL1 Recombinant antibody, PBS Only (Detector) 85174-1-PBS (242377B4). 100 µg. Concentration 1 mg/mL.

Unconjugated rabbit recombinant monoclonal antibody pair in PBS only storage buffer at a concentration of 1 mg/mL, ready for conjugation. Created using Proteintech's proprietary in-house recombinant technology. Recombinant production enables unrivalled batch-to-batch consistency, easy scale-up, and future security of supply.

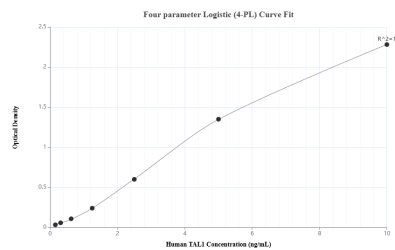
Matched antibody pairs are designed for use in a variety of assays and platforms that require matched antibody pairs.

Antibody use should be optimized for each application and assay.

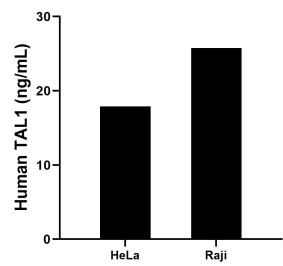
Storage

Storage:
Store at -80°C.
The product is shipped with ice packs. Upon receipt, store it immediately at -80°C
Storage buffer:
PBS only

Selected Validation Data



Sandwich ELISA standard curve of MP01902-1, Human TAL1 Recombinant Matched Antibody Pair - PBS only. 85174-2-PBS was coated to a plate as the capture antibody and incubated with serial dilutions of standard Ag32752. 85174-1-PBS was HRP conjugated as the detection antibody. Range: 0.156-10 ng/mL



The mean TAL1 concentration was determined to be 17.89 ng/mL in HeLa cell extract based on a 1.5 mg/mL extract load and 25.77 ng/mL in Raji cell extract based on a 1.0 mg/mL extract load.