

ICOSLG/B7-H2/CD275 Recombinant Matched Antibody Pair, PBS Only

Catalog Number: **MP01890-1**

Capture Antibody Information

Catalog Number:
85173-3-PBS
Host:
Rabbit
Isotype:
IgG
Purification Method:
Protein A purification

Clone ID:
242241F5
Reactivity:
human
GenBank:
BC064637

Conjugate:
Unconjugated
Full name:
inducible T-cell co-stimulator ligand
Gene ID:
23308

Detection Antibody Information

Catalog Number:
85173-1-PBS
Host:
Rabbit
Isotype:
IgG
Purification Method:
Protein A purification

Clone ID:
242241B5
Reactivity:
human
GenBank:
BC064637

Conjugate:
Unconjugated
Full name:
inducible T-cell co-stimulator ligand
Gene ID:
23308

Applications

Tested Applications:
Cytometric bead array, Sandwich ELISA

Range:
1.563-200 ng/mL (Cytometric Bead Array)
3.13-200 ng/mL (Sandwich ELISA)

Recommended Dilutions:
It is recommended that this reagent should be titrated in each testing system to obtain optimal results.

Product Information

MP01890-1 targets ICOSLG/B7-H2/CD275 in immunoassays as a matched antibody pair. Validated in Cytometric bead array, Sandwich ELISA.

Capture antibody: ICOSLG Recombinant antibody, PBS Only (Capture) 85173-3-PBS (242241F5). 100 µg. Concentration 1 mg/mL.

Detection antibody: ICOSLG Recombinant antibody, PBS Only (Capture/Detector) 85173-1-PBS (242241B5). 100 µg. Concentration 1 mg/mL.

Unconjugated rabbit recombinant monoclonal antibody pair in PBS only storage buffer at a concentration of 1 mg/mL, ready for conjugation. Created using Proteintech's proprietary in-house recombinant technology. Recombinant production enables unrivalled batch-to-batch consistency, easy scale-up, and future security of supply.

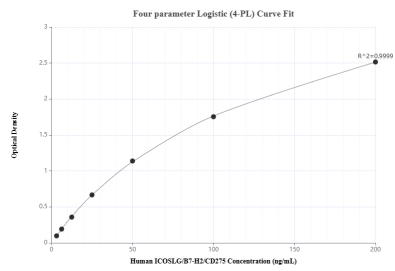
Matched antibody pairs are designed for use in a variety of assays and platforms that require matched antibody pairs.

Antibody use should be optimized for each application and assay.

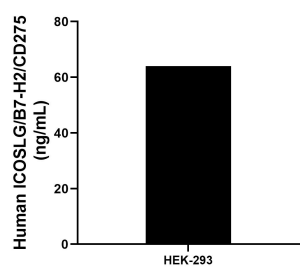
Storage

Storage:
Store at -80°C.
The product is shipped with ice packs. Upon receipt, store it immediately at -80°C
Storage buffer:
PBS only

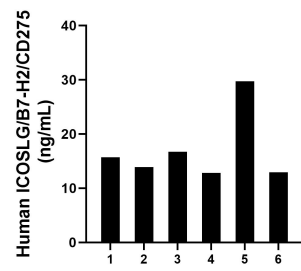
Selected Validation Data



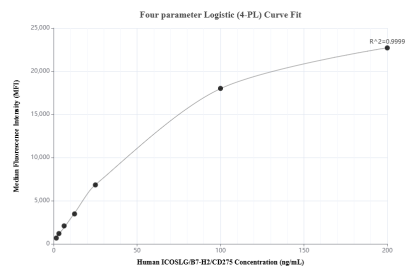
Sandwich ELISA standard curve of MP01890-1, Human ICOSLG/B7-H2/CD275 Recombinant Matched Antibody Pair - PBS only. 85173-3-PBS was coated to a plate as the capture antibody and incubated with serial dilutions of standard Eg0008. 85173-1-PBS was HRP conjugated as the detection antibody. Range: 3.13-200 ng/mL



The mean ICOSLG/B7-H2/CD275 concentration was determined to be 63.95 ng/mL in HEK-293 cell extract based on a 2.7 mg/mL extract load.



Serum of six individual healthy human donors was measured. The human ICOSLG/B7-H2/CD275 concentration of detected samples was determined to be 16.96 ng/mL with a range of 12.81 - 29.75 ng/mL.



Cytometric bead array standard curve of MP01890-1, ICOSLG/B7-H2/CD275 Recombinant Matched Antibody Pair, PBS Only. Capture antibody: 85173-3-PBS. Detection antibody: 85173-1-PBS. Standard: Eg0008. Range: 1.563-200 ng/mL