

NUP214 Recombinant Matched Antibody Pair, PBS Only

Catalog Number: **MP01882-3**

Capture Antibody Information

Catalog Number: 85161-2-PBS	Clone ID: 242782C7	Conjugate: Unconjugated
Host: Rabbit	Reactivity: human	Full name: nucleoporin 214kDa
Isotype: IgG	GenBank: BC105998	Gene ID: 8021
Purification Method: Protein A purification	Immunogen Catalog Number: Ag21377	

Detection Antibody Information

Catalog Number: 85161-5-PBS	Clone ID: 242782G10	Conjugate: Unconjugated
Host: Rabbit	Reactivity: human	Full name: nucleoporin 214kDa
Isotype: IgG	GenBank: BC105998	Gene ID: 8021
Purification Method: Protein A purification	Immunogen Catalog Number: Ag21377	

Applications

Tested Applications: Sandwich ELISA	Range: 1.56-100 ng/mL (Sandwich ELISA)	Recommended Dilutions: It is recommended that this reagent should be titrated in each testing system to obtain optimal results.
---	--	---

Product Information

MP01882-3 targets NUP214 in immunoassays as a matched antibody pair. Validated in Sandwich ELISA.

Capture antibody: NUP214 Recombinant antibody, PBS Only (Capture) 85161-2-PBS (242782C7). 100 µg. Concentration 1 mg/mL.

Detection antibody: NUP214 Recombinant antibody, PBS Only (Detector) 85161-5-PBS (242782G10). 100 µg. Concentration 1 mg/mL.

Unconjugated rabbit recombinant monoclonal antibody pair in PBS only storage buffer at a concentration of 1 mg/mL, ready for conjugation. Created using Proteintech's proprietary in-house recombinant technology. Recombinant production enables unrivalled batch-to-batch consistency, easy scale-up, and future security of supply.

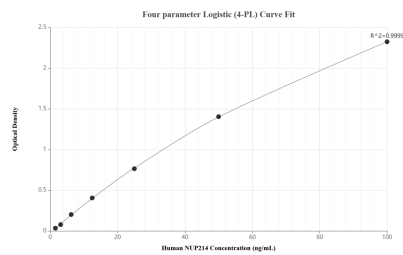
Matched antibody pairs are designed for use in a variety of assays and platforms that require matched antibody pairs.

Antibody use should be optimized for each application and assay.

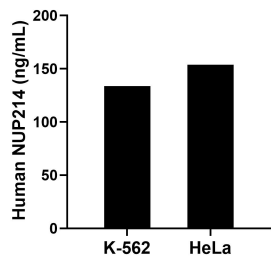
Storage

Storage:
Store at -80°C.
The product is shipped with ice packs. Upon receipt, store it immediately at -80°C
Storage buffer:
PBS only

Selected Validation Data



Sandwich ELISA standard curve of MP01882-3, Human NUP214 Recombinant Matched Antibody Pair - PBS only. 85161-2-PBS was coated to a plate as the capture antibody and incubated with serial dilutions of standard Ag21377. 85161-5-PBS was HRP conjugated as the detection antibody. Range: 1.56-100 ng/mL



The mean NUP214 concentration was determined to be 133.70 ng/mL in K-562 cell extract based on a 2.50 mg/mL extract load and 153.72 ng/mL in HeLa cell extract based on a 1.50 mg/mL extract load.