

# Mouse DPP4/CD26 Recombinant Matched Antibody Pair, PBS Only

Catalog Number: **MP01879-3**

## Capture Antibody Information

|  |                                     |                                     |
|--|-------------------------------------|-------------------------------------|
| Catalog Number:<br>85159-4-PBS                 | Clone ID:<br>242823E7               | Conjugate:<br>Unconjugated          |
| Host:<br>Rabbit                                | Reactivity:<br>mouse                | Full name:<br>dipeptidylpeptidase 4 |
| Isotype:<br>IgG                                | GenBank:<br>NM_010074.3             | Gene ID:<br>13482                   |
| Purification Method:<br>Protein A purification | Immunogen Catalog Number:<br>Eg1384 |                                     |

## Detection Antibody Information

|  |                                     |                                     |
|--|-------------------------------------|-------------------------------------|
| Catalog Number:<br>85159-2-PBS                 | Clone ID:<br>242823D2               | Conjugate:<br>Unconjugated          |
| Host:<br>Rabbit                                | Reactivity:<br>mouse                | Full name:<br>dipeptidylpeptidase 4 |
| Isotype:<br>IgG                                | GenBank:<br>NM_010074.3             | Gene ID:<br>13482                   |
| Purification Method:<br>Protein A purification | Immunogen Catalog Number:<br>Eg1384 |                                     |

## Applications

|  |   |  |
|--|---|--|
| Tested Applications:<br>Sandwich ELISA | Range:<br>0.391-25 ng/mL (Sandwich ELISA) | Recommended Dilutions:<br>It is recommended that this reagent should be titrated in each testing system to obtain optimal results. |
|--|---|--|

## Product Information

MP01879-3 targets DPP4/CD26 in immunoassays as a matched antibody pair. Validated in Sandwich ELISA.

Capture antibody: Mouse DPP4/CD26 Recombinant antibody, PBS Only (Capture) 85159-4-PBS (242823E7). 100 µg. Concentration 1 mg/mL.

Detection antibody: Mouse DPP4/CD26 Recombinant antibody, PBS Only (Detector) 85159-2-PBS (242823D2). 100 µg. Concentration 1 mg/mL.

Unconjugated rabbit recombinant monoclonal antibody pair in PBS only storage buffer at a concentration of 1 mg/mL, ready for conjugation. Created using Proteintech's proprietary in-house recombinant technology. Recombinant production enables unrivalled batch-to-batch consistency, easy scale-up, and future security of supply.

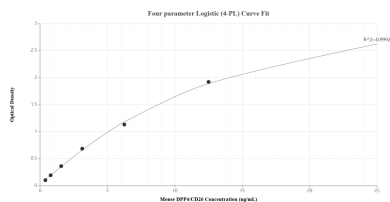
Matched antibody pairs are designed for use in a variety of assays and platforms that require matched antibody pairs.

Antibody use should be optimized for each application and assay.

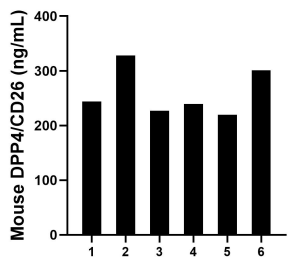
## Storage

Storage:  
Store at -80°C.  
**The product is shipped with ice packs. Upon receipt, store it immediately at -80°C**  
Storage buffer:  
PBS only

## Selected Validation Data



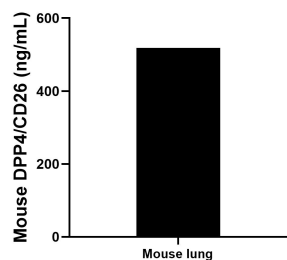
Sandwich ELISA standard curve of MP01879-3, Mouse DPP4/CD26 Recombinant Matched Antibody Pair - PBS only. 85159-4-PBS was coated to a plate as the capture antibody and incubated with serial dilutions of standard Eg1384. 85159-2-PBS was HRP conjugated as the detection antibody. Range: 0.391-25 ng/mL



Serum of six mice was measured. The DPP4/CD26 concentration of detected samples was determined to be 259.81 ng/mL with a range of 219.51-328.25 ng/mL



Mouse lung (3 lungs in 1-2 mm pieces in 100 mL of medium) was cultured in RPMI supplemented. An aliquot of the cell culture supernatant was removed, assayed for DPP4/CD26, and measured 6.12 ng/mL



The mean DPP4/CD26 concentration was determined to be 518.45 ng/mL in mouse lung tissue extract based on a 5.90 mg/mL extract load.