

# SORBS1 Recombinant Matched Antibody Pair, PBS Only

Catalog Number: **MP01871-1**

## Capture Antibody Information

**Catalog Number:**  
85158-2-PBS  
**Host:**  
Rabbit  
**Isotype:**  
IgG  
**Purification Method:**  
Protein A purification

**Clone ID:**  
242797G4  
**Reactivity:**  
human  
**GenBank:**  
BC042612  
**Immunogen Catalog Number:**  
Ag4828

**Conjugate:**  
Unconjugated  
**Full name:**  
sorbin and SH3 domain containing 1  
**Gene ID:**  
10580

## Detection Antibody Information

**Catalog Number:**  
85158-3-PBS  
**Host:**  
Rabbit  
**Isotype:**  
IgG  
**Purification Method:**  
Protein A purification

**Clone ID:**  
242797G9  
**Reactivity:**  
human  
**GenBank:**  
BC042612  
**Immunogen Catalog Number:**  
Ag4828

**Conjugate:**  
Unconjugated  
**Full name:**  
sorbin and SH3 domain containing 1  
**Gene ID:**  
10580

## Applications

**Tested Applications:**  
Cytometric bead array, Sandwich ELISA

**Range:**  
0.781-100 ng/mL (Cytometric Bead Array)  
0.781-50 ng/mL (Sandwich ELISA)

**Recommended Dilutions:**  
It is recommended that this reagent should be titrated in each testing system to obtain optimal results.

## Product Information

MP01871-1 targets SORBS1 in immunoassays as a matched antibody pair. Validated in Cytometric bead array, Sandwich ELISA.

Capture antibody: SORBS1 Recombinant antibody, PBS Only (Capture) 85158-2-PBS (242797G4). 100 µg. Concentration 1 mg/mL.

Detection antibody: SORBS1 Recombinant antibody, PBS Only (Detector) 85158-3-PBS (242797G9). 100 µg. Concentration 1 mg/mL.

Unconjugated rabbit recombinant monoclonal antibody pair in PBS only storage buffer at a concentration of 1 mg/mL, ready for conjugation. Created using Proteintech's proprietary in-house recombinant technology. Recombinant production enables unrivalled batch-to-batch consistency, easy scale-up, and future security of supply.

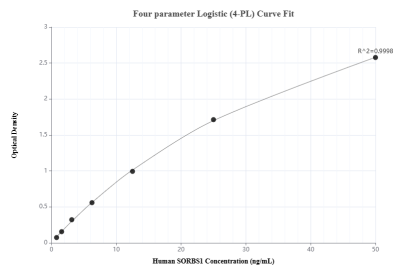
Matched antibody pairs are designed for use in a variety of assays and platforms that require matched antibody pairs.

Antibody use should be optimized for each application and assay.

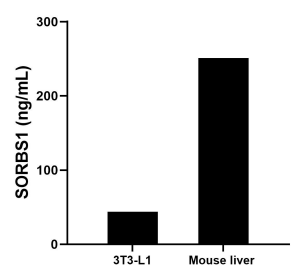
## Storage

**Storage:**  
Store at -80°C.  
**The product is shipped with ice packs. Upon receipt, store it immediately at -80°C**  
**Storage buffer:**  
PBS only

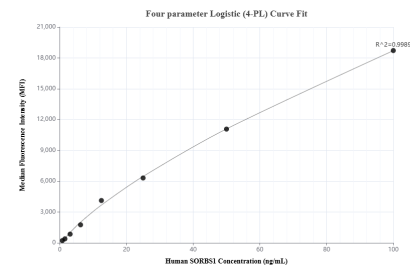
## Selected Validation Data



Sandwich ELISA standard curve of MP01871-1, Human SORBS1 Recombinant Matched Antibody Pair - PBS only. 85158-2-PBS was coated to a plate as the capture antibody and incubated with serial dilutions of standard Ag4828. 85158-3-PBS was HRP conjugated as the detection antibody. Range: 0.781-50 ng/mL



The mean SORBS1 concentration was determined to be 43.68 ng/mL in 3T3-L1 cell extract based on a 1.3 mg/mL extract load and 250.85 ng/mL in mouse liver tissue extract based on a 3.7 mg/mL extract load.



Cytometric bead array standard curve of MP01871-1, SORBS1 Recombinant Matched Antibody Pair, PBS Only. Capture antibody: 85158-2-PBS. Detection antibody: 85158-3-PBS. Standard: Ag4828. Range: 0.781-100 ng/mL