

ZFP36L2 Recombinant Matched Antibody Pair, PBS Only

Catalog Number: **MP01862-3**

Capture Antibody Information

Catalog Number: 85154-6-PBS	Clone ID: 242776D3	Conjugate: Unconjugated
Host: Rabbit	Reactivity: human	Full name: zinc finger protein 36, C3H type-like 2
Isotype: IgG	GenBank: BC005010	Gene ID: 678
Purification Method: Protein A purification	Immunogen Catalog Number: Ag13515	

Detection Antibody Information

Catalog Number: 85154-1-PBS	Clone ID: 242776C11	Conjugate: Unconjugated
Host: Rabbit	Reactivity: human	Full name: zinc finger protein 36, C3H type-like 2
Isotype: IgG	GenBank: BC005010	Gene ID: 678
Purification Method: Protein A purification	Immunogen Catalog Number: Ag13515	

Applications

Tested Applications: Sandwich ELISA	Range: 0.781-50 ng/mL (Sandwich ELISA)	Recommended Dilutions: It is recommended that this reagent should be titrated in each testing system to obtain optimal results.
---	--	---

Product Information

MP01862-3 targets ZFP36L2 in immunoassays as a matched antibody pair. Validated in Sandwich ELISA.

Capture antibody: ZFP36L2 Recombinant antibody, PBS Only (Capture) 85154-6-PBS (242776D3). 100 µg. Concentration 1 mg/mL.

Detection antibody: ZFP36L2 Recombinant antibody, PBS Only (Detector) 85154-1-PBS (242776C11). 100 µg. Concentration 1 mg/mL.

Unconjugated rabbit recombinant monoclonal antibody pair in PBS only storage buffer at a concentration of 1 mg/mL, ready for conjugation. Created using Proteintech's proprietary in-house recombinant technology. Recombinant production enables unrivalled batch-to-batch consistency, easy scale-up, and future security of supply.

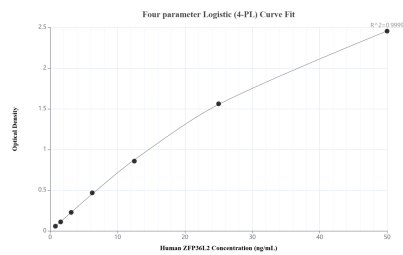
Matched antibody pairs are designed for use in a variety of assays and platforms that require matched antibody pairs.

Antibody use should be optimized for each application and assay.

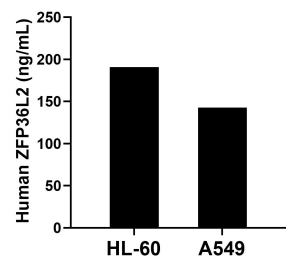
Storage

Storage:
Store at -80°C.
The product is shipped with ice packs. Upon receipt, store it immediately at -80°C
Storage buffer:
PBS only

Selected Validation Data



Sandwich ELISA standard curve of MP01862-3, Human ZFP36L2 Recombinant Matched Antibody Pair - PBS only. 85154-6-PBS was coated to a plate as the capture antibody and incubated with serial dilutions of standard Ag13515. 85154-1-PBS was HRP conjugated as the detection antibody. Range: 0.781-50 ng/mL



The mean ZFP36L2 concentration was determined to be 190.62 ng/mL in HL-60 cell extract based on a 1.50 mg/mL extract load and 142.84 ng/mL in A549 cell extract based on a 2.60 mg/mL extract load.