

# ETS2 Recombinant Matched Antibody Pair, PBS Only

Catalog Number: **MP01858-3**

## Capture Antibody Information

**Catalog Number:**  
85113-4-PBS  
**Host:**  
Rabbit  
**Isotype:**  
IgG  
**Purification Method:**  
Protein A purification

**Clone ID:**  
242817H8  
**Reactivity:**  
human  
**GenBank:**  
BC017040  
**Immunogen Catalog Number:**  
Ag2929

**Conjugate:**  
Unconjugated  
**Full name:**  
v-ets erythroblastosis virus E26 oncogene homolog 2 (avian)  
**Gene ID:**  
2114

## Detection Antibody Information

**Catalog Number:**  
85113-1-PBS  
**Host:**  
Rabbit  
**Isotype:**  
IgG  
**Purification Method:**  
Protein A purification

**Clone ID:**  
242817A10  
**Reactivity:**  
human  
**GenBank:**  
BC017040  
**Immunogen Catalog Number:**  
Ag2929

**Conjugate:**  
Unconjugated  
**Full name:**  
v-ets erythroblastosis virus E26 oncogene homolog 2 (avian)  
**Gene ID:**  
2114

## Applications

**Tested Applications:**  
Sandwich ELISA

**Range:**  
0.156-10 ng/mL (Sandwich ELISA)

**Recommended Dilutions:**  
It is recommended that this reagent should be titrated in each testing system to obtain optimal results.

## Product Information

MP01858-3 targets ETS2 in immunoassays as a matched antibody pair. Validated in Sandwich ELISA.

Capture antibody: ETS2 Recombinant antibody, PBS Only (Capture) 85113-4-PBS (242817H8). 100 µg. Concentration 1 mg/mL.

Detection antibody: ETS2 Recombinant antibody, PBS Only (Detector) 85113-1-PBS (242817A10). 100 µg. Concentration 1 mg/mL.

Unconjugated rabbit recombinant monoclonal antibody pair in PBS only storage buffer at a concentration of 1 mg/mL, ready for conjugation. Created using Proteintech's proprietary in-house recombinant technology. Recombinant production enables unrivalled batch-to-batch consistency, easy scale-up, and future security of supply.

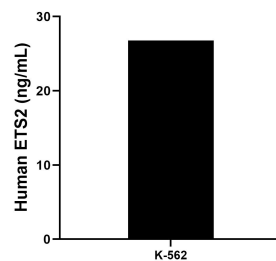
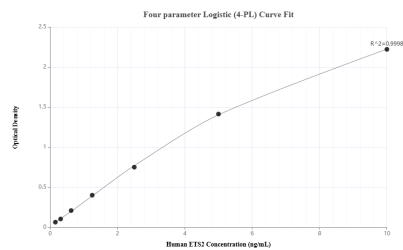
Matched antibody pairs are designed for use in a variety of assays and platforms that require matched antibody pairs.

Antibody use should be optimized for each application and assay.

## Storage

**Storage:**  
Store at -80°C.  
**The product is shipped with ice packs. Upon receipt, store it immediately at -80°C**  
**Storage buffer:**  
PBS only

## Selected Validation Data



Sandwich ELISA standard curve of MP01858-3, Human ETS2 Recombinant Matched Antibody Pair - PBS only. 85113-4-PBS was coated to a plate as the capture antibody and incubated with serial dilutions of standard Ag2929. 85113-1-PBS was HRP conjugated as the detection antibody. Range: 0.156-10 ng/mL

The mean ETS2 concentration was determined to be 26.79 ng/mL in K-562 cell extract based on a 2.0 mg/mL extract load.