

# Caspase 10 Recombinant Matched Antibody Pair, PBS Only

Catalog Number: **MP01855-1**

## Capture Antibody Information

**Catalog Number:**  
85104-2-PBS  
**Host:**  
Rabbit  
**Isotype:**  
IgG  
**Purification Method:**  
Protein A purification

**Clone ID:**  
242468C3  
**Reactivity:**  
human  
**GenBank:**  
BC042844

**Conjugate:**  
Unconjugated  
**Full name:**  
caspase 10, apoptosis-related cysteine peptidase  
**Gene ID:**  
843

## Detection Antibody Information

**Catalog Number:**  
85104-1-PBS  
**Host:**  
Rabbit  
**Isotype:**  
IgG  
**Purification Method:**  
Protein A purification

**Clone ID:**  
242468B5  
**Reactivity:**  
human  
**GenBank:**  
BC042844

**Conjugate:**  
Unconjugated  
**Full name:**  
caspase 10, apoptosis-related cysteine peptidase  
**Gene ID:**  
843

## Applications

**Tested Applications:**  
Sandwich ELISA

**Range:**  
78.1-5000 pg/mL (Sandwich ELISA)

**Recommended Dilutions:**  
It is recommended that this reagent should be titrated in each testing system to obtain optimal results.

## Product Information

MP01855-1 targets Caspase 10 in immunoassays as a matched antibody pair. Validated in Sandwich ELISA.

Capture antibody: Caspase 10 Recombinant antibody, PBS Only (Capture) 85104-2-PBS (242468C3). 100 µg. Concentration 1 mg/mL.

Detection antibody: Caspase 10 Recombinant antibody, PBS Only (Detector) 85104-1-PBS (242468B5). 100 µg. Concentration 1 mg/mL.

Unconjugated rabbit recombinant monoclonal antibody pair in PBS only storage buffer at a concentration of 1 mg/mL, ready for conjugation. Created using Proteintech's proprietary in-house recombinant technology. Recombinant production enables unrivalled batch-to-batch consistency, easy scale-up, and future security of supply.

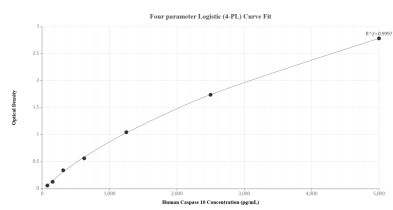
Matched antibody pairs are designed for use in a variety of assays and platforms that require matched antibody pairs.

Antibody use should be optimized for each application and assay.

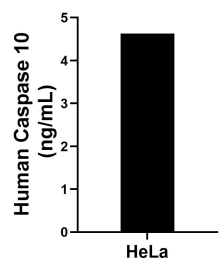
## Storage

**Storage:**  
Store at -80°C.  
**The product is shipped with ice packs. Upon receipt, store it immediately at -80°C**  
**Storage buffer:**  
PBS only

## Selected Validation Data



Sandwich ELISA standard curve of MP01855-1, Human Caspase 10 Recombinant Matched Antibody Pair - PBS only. 85104-2-PBS was coated to a plate as the capture antibody and incubated with serial dilutions of standard SY02408. 85104-1-PBS was HRP conjugated as the detection antibody. Range: 78.1-5000 pg/mL.



The mean Caspase 10 concentration was determined to be 4.6 ng/mL in HeLa cell extract based on a 1.0 mg/mL extract load.