

Mouse CXCR2 Recombinant Matched Antibody Pair, PBS Only

Catalog Number: **MP01850-3**

Capture Antibody Information

Catalog Number:

85144-4-PBS

Host:

Rabbit

Isotype:

IgG

Purification Method:

Protein A purification

Clone ID:

242766G12

Reactivity:

mouse

GenBank:

NM_009909.3

Conjugate:

Unconjugated

Full name:

interleukin 8 receptor, beta

Gene ID:

12765

Detection Antibody Information

Catalog Number:

85144-2-PBS

Host:

Rabbit

Isotype:

IgG

Purification Method:

Protein A purification

Clone ID:

242766E12

Reactivity:

mouse

GenBank:

NM_009909.3

Conjugate:

Unconjugated

Full name:

interleukin 8 receptor, beta

Gene ID:

12765

Applications

Tested Applications:

Sandwich ELISA

Range:

39.1-2500 pg/mL (Sandwich ELISA)

Recommended Dilutions:

It is recommended that this reagent should be titrated in each testing system to obtain optimal results.

Product Information

MP01850-3 targets CXCR2 in immunoassays as a matched antibody pair. Validated in Sandwich ELISA.

Capture antibody: Mouse CXCR2 Recombinant antibody, PBS Only (Capture) 85144-4-PBS (242766G12). 100 µg. Concentration 1 mg/mL.

Detection antibody: Mouse CXCR2 Recombinant antibody, PBS Only (Capture/Detector) 85144-2-PBS (242766E12). 100 µg. Concentration 1 mg/mL.

Unconjugated rabbit recombinant monoclonal antibody pair in PBS only storage buffer at a concentration of 1 mg/mL, ready for conjugation. Created using Proteintech's proprietary in-house recombinant technology. Recombinant production enables unrivalled batch-to-batch consistency, easy scale-up, and future security of supply.

Matched antibody pairs are designed for use in a variety of assays and platforms that require matched antibody pairs.

Antibody use should be optimized for each application and assay.

Storage

Storage:

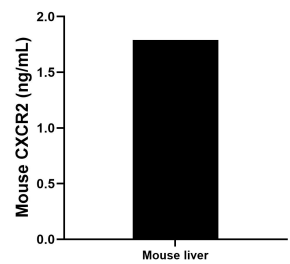
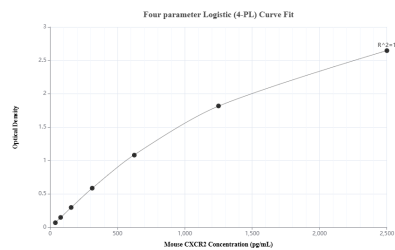
Store at -80°C.

The product is shipped with ice packs. Upon receipt, store it immediately at -80°C

Storage buffer:

PBS only

Selected Validation Data



Sandwich ELISA standard curve of MP01823-2, Mouse CXCR2 Recombinant Matched Antibody Pair - PBS only. 85144-4-PBS was coated to a plate as the capture antibody and incubated with serial dilutions of standard Eg2228. 85144-2-PBS was HRP conjugated as the detection antibody. Range: 39.1-2500 pg/mL

The mean CXCR2 concentration was determined to be 1.79 ng/mL in mouse liver tissue extract based on a 3.7 mg/mL extract load.