

# CCL7/MCP-3 Recombinant Matched Antibody Pair, PBS Only

Catalog Number: **MP01847-3**

## Capture Antibody Information

**Catalog Number:**

85123-2-PBS

**Host:**

Rabbit

**Isotype:**

IgG

**Purification Method:**

Protein A purification

**Clone ID:**

242607C3

**Reactivity:**

human

**GenBank:**

BC092436

**Conjugate:**

Unconjugated

**Full name:**

chemokine (C-C motif) ligand 7

**Gene ID:**

6354

## Detection Antibody Information

**Catalog Number:**

85123-4-PBS

**Host:**

Rabbit

**Isotype:**

IgG

**Purification Method:**

Protein A purification

**Clone ID:**

242607C6

**Reactivity:**

human

**GenBank:**

BC092436

**Conjugate:**

Unconjugated

**Full name:**

chemokine (C-C motif) ligand 7

**Gene ID:**

6354

## Applications

**Tested Applications:**

Sandwich ELISA

**Range:**

19.5-1250 pg/mL (Sandwich ELISA)

**Recommended Dilutions:**

It is recommended that this reagent should be titrated in each testing system to obtain optimal results.

## Product Information

MP01847-3 targets CCL7/MCP-3 in immunoassays as a matched antibody pair. Validated in Sandwich ELISA.

Capture antibody: CCL7 Recombinant antibody, PBS Only (Capture) 85123-2-PBS (242607C3). 100 µg. Concentration 1 mg/mL.

Detection antibody: CCL7 Recombinant antibody, PBS Only (Detector) 85123-4-PBS (242607C6). 100 µg. Concentration 1 mg/mL.

Unconjugated rabbit recombinant monoclonal antibody pair in PBS only storage buffer at a concentration of 1 mg/mL, ready for conjugation. Created using Proteintech's proprietary in-house recombinant technology. Recombinant production enables unrivalled batch-to-batch consistency, easy scale-up, and future security of supply.

Matched antibody pairs are designed for use in a variety of assays and platforms that require matched antibody pairs.

Antibody use should be optimized for each application and assay.

## Storage

**Storage:**

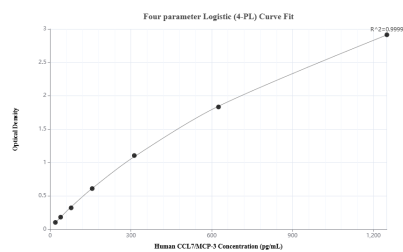
Store at -80°C.

**The product is shipped with ice packs. Upon receipt, store it immediately at -80°C**

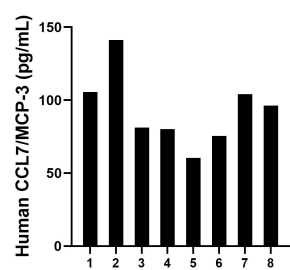
**Storage buffer:**

PBS only

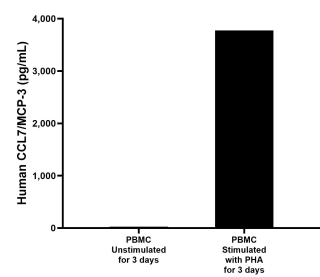
## Selected Validation Data



Sandwich ELISA standard curve of MP01847-3, Human CCL7/MCP-3 Recombinant Matched Antibody Pair - PBS only. 85123-2-PBS was coated to a plate as the capture antibody and incubated with serial dilutions of standard Eg3337. 85123-4-PBS was HRP conjugated as the detection antibody. Range: 19.5-1250 pg/mL



Serum of eight individual healthy human donors was measured. The human CCL7/MCP-3 concentration of detected samples was determined to be 93.1 pg/mL with a range of 60.4-141.2 pg/mL



Human peripheral blood mononuclear cells (PBMC) were cultured unstimulated or stimulated with 10  $\mu$ g/mL PHA for 3 days. The mean CCL7/MCP-3 concentration was determined to be 24.2 pg/mL in unstimulated PBMC supernatant, 3,774.7 pg/mL in PHA stimulated PBMC supernatant.