

For Research Use Only

EPHB4 Recombinant Matched Antibody Pair, PBS Only



Catalog Number:MP01825-3

Capture Antibody Information

Catalog Number:
85139-6-PBS

Host:
Rabbit

Isotype:
IgG

Purification Method:
Protein A purification

Clone ID:
252186D11

Reactivity:
human

GenBank:
NM_004444.4

Immunogen Catalog Number:
Eg6504

Conjugate:
Unconjugated

Full name:
EPH receptor B4

Gene ID:
2050

Detection Antibody Information

Catalog Number:
85139-5-PBS

Host:
Rabbit

Isotype:
IgG

Purification Method:
Protein A purification

Clone ID:
252186D1

Reactivity:
human

GenBank:
NM_004444.4

Immunogen Catalog Number:
Eg6504

Conjugate:
Unconjugated

Full name:
EPH receptor B4

Gene ID:
2050

Applications

Tested Applications:
Cytometric bead array

Range:
0.625-80 ng/mL (Cytometric Bead Array)

Recommended Dilutions:
It is recommended that this reagent should be titrated in each testing system to obtain optimal results.

Product Information

MP01825-3 targets EPHB4 in immunoassays as a matched antibody pair. Validated in Cytometric bead array.

Capture antibody: EPHB4 Recombinant monoclonal antibody, PBS Only (Capture) 85139-6-PBS (252186D11). 100 μ g. Concentration 1 mg/mL.

Detection antibody: EPHB4 Recombinant monoclonal antibody, PBS Only (Detector) 85139-5-PBS (252186D1). 100 μ g. Concentration 1 mg/mL.

Unconjugated rabbit recombinant monoclonal antibody pair in PBS only storage buffer at a concentration of 1 mg/mL, ready for conjugation. Created using Proteintech's proprietary in-house recombinant technology. Recombinant production enables unrivalled batch-to-batch consistency, easy scale-up, and future security of supply.

Matched antibody pairs are designed for use in a variety of assays and platforms that require matched antibody pairs.

Antibody use should be optimized for each application and assay.

Storage

Storage:

Store at -80°C.

The product is shipped with ice packs. Upon receipt, store it immediately at -80°C

Storage buffer:

PBS only

For technical support and original validation data for this product please contact:

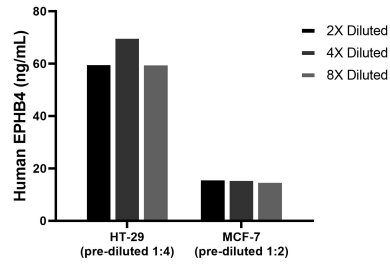
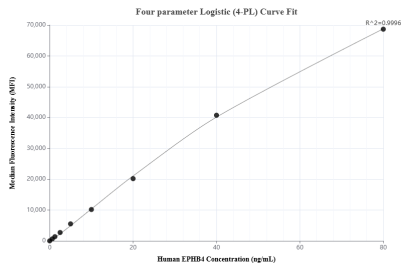
T: 4006900926

E: Proteintech-CN@ptglab.com

W: ptgcn.com

This product is exclusively available under Proteintech Group brand and is not available to purchase from any other manufacturer.

Selected Validation Data



Cytometric bead array standard curve of MP01825-3, EPHB4 Recombinant Matched Antibody Pair, PBS Only. Capture antibody: 85139-6-PBS. Detection antibody: 85139-5-PBS. Standard: Eg6504. Range: 0.625-80 ng/mL

The mean EPHB4 concentration was determined to be 80.6 ng/mL in HT-29 cell extract based on a 1.5 mg/mL extract load, 16.0 ng/mL in MCF-7 cell extract based on a 1.2 mg/mL extract load.