

TPX2 Recombinant Matched Antibody Pair, PBS Only

Catalog Number: **MP01821-3**

Capture Antibody Information

Catalog Number:
85118-3-PBS
Host:
Rabbit
Isotype:
IgG
Purification Method:
Protein A purification

Clone ID:
242528F9
Reactivity:
human
GenBank:
BC020207
Immunogen Catalog Number:
Ag2334

Conjugate:
Unconjugated
Full name:
TPX2, microtubule-associated, homolog (Xenopus laevis)
Gene ID:
22974

Detection Antibody Information

Catalog Number:
85118-4-PBS
Host:
Rabbit
Isotype:
IgG
Purification Method:
Protein A purification

Clone ID:
242528A4
Reactivity:
human
GenBank:
BC020207
Immunogen Catalog Number:
Ag2334

Conjugate:
Unconjugated
Full name:
TPX2, microtubule-associated, homolog (Xenopus laevis)
Gene ID:
22974

Applications

Tested Applications:
Sandwich ELISA

Range:
78.1-5000 pg/mL (Sandwich ELISA)

Recommended Dilutions:
It is recommended that this reagent should be titrated in each testing system to obtain optimal results.

Product Information

MP01821-3 targets TPX2 in immunoassays as a matched antibody pair. Validated in Sandwich ELISA.

Capture antibody: TPX2 Recombinant antibody, PBS Only (Capture/Detector) 85118-3-PBS (242528F9). 100 µg. Concentration 1 mg/mL.

Detection antibody: TPX2 Recombinant antibody, PBS Only (Detector) 85118-4-PBS (242528A4). 100 µg. Concentration 1 mg/mL.

Unconjugated rabbit recombinant monoclonal antibody pair in PBS only storage buffer at a concentration of 1 mg/mL, ready for conjugation. Created using Proteintech's proprietary in-house recombinant technology. Recombinant production enables unrivalled batch-to-batch consistency, easy scale-up, and future security of supply.

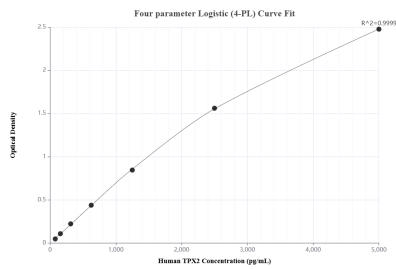
Matched antibody pairs are designed for use in a variety of assays and platforms that require matched antibody pairs.

Antibody use should be optimized for each application and assay.

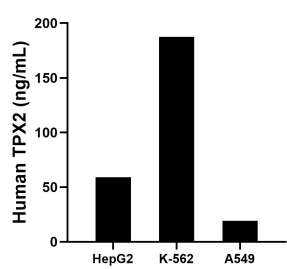
Storage

Storage:
Store at -80°C.
The product is shipped with ice packs. Upon receipt, store it immediately at -80°C
Storage buffer:
PBS only

Selected Validation Data



Sandwich ELISA standard curve of MP01821-3, Human TPX2 Recombinant Matched Antibody Pair - PBS only. 85118-3-PBS was coated to a plate as the capture antibody and incubated with serial dilutions of standard Ag2334. 85118-4-PBS was HRP conjugated as the detection antibody. Range: 78.1-5000 pg/mL



The mean TPX2 concentration was determined to be 59.0 ng/mL in HepG2 cell extract based on a 1.0 mg/mL extract load, 187.5 ng/mL in K-562 cell extract based on a 2.5 mg/mL extract load and 19.2 ng/mL in A549 cell extract based on a 1.5 mg/mL extract load.