

# Mouse IL-1R2 Recombinant Matched Antibody Pair, PBS Only

Catalog Number: **MP01814-4**

## Capture Antibody Information

**Catalog Number:**  
85071-2-PBS

**Host:**  
Rabbit

**Isotype:**  
IgG

**Purification Method:**  
Protein A purification

**Clone ID:**  
242602C2

**Reactivity:**  
mouse

**GenBank:**  
NM\_010555.4

**Immunogen Catalog Number:**  
Eg2956

**Conjugate:**  
Unconjugated

**Full name:**  
interleukin 1 receptor, type II

**Gene ID:**  
16178

## Detection Antibody Information

**Catalog Number:**  
85071-5-PBS

**Host:**  
Rabbit

**Isotype:**  
IgG

**Purification Method:**  
Protein A purification

**Clone ID:**  
242602H6

**Reactivity:**  
mouse

**GenBank:**  
NM\_010555.4

**Immunogen Catalog Number:**  
Eg2956

**Conjugate:**  
Unconjugated

**Full name:**  
interleukin 1 receptor, type II

**Gene ID:**  
16178

## Applications

**Tested Applications:**  
Cytometric bead array

**Range:**  
0.781-100 ng/mL (Cytometric Bead Array)

**Recommended Dilutions:**  
It is recommended that this reagent should be titrated in each testing system to obtain optimal results.

## Product Information

MP01814-4 targets IL-1R2 in immunoassays as a matched antibody pair. Validated in Cytometric bead array.

Capture antibody: Mouse IL1r2 Recombinant antibody, PBS Only (Capture) 85071-2-PBS (242602C2). 100  $\mu$ g. Concentration 1 mg/mL.

Detection antibody: Mouse IL1r2 Recombinant antibody, PBS Only (Detector) 85071-5-PBS (242602H6). 100  $\mu$ g. Concentration 1 mg/mL.

Unconjugated rabbit recombinant monoclonal antibody pair in PBS only storage buffer at a concentration of 1 mg/mL, ready for conjugation. Created using Proteintech's proprietary in-house recombinant technology. Recombinant production enables unrivalled batch-to-batch consistency, easy scale-up, and future security of supply.

Matched antibody pairs are designed for use in a variety of assays and platforms that require matched antibody pairs.

Antibody use should be optimized for each application and assay.

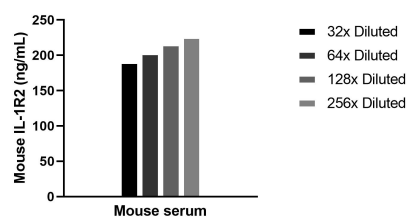
## Storage

**Storage:**  
Store at -80°C.

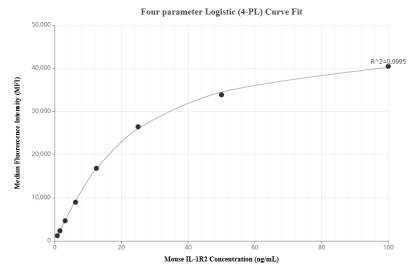
**The product is shipped with ice packs. Upon receipt, store it immediately at -80°C**

**Storage buffer:**  
PBS only

## Selected Validation Data



The mean IL-1R2 concentration was determined to be 208.4 ng/mL in mouse serum.



Cytometric bead array standard curve of MP01814-4, MOUSE IL-1R2 Recombinant Matched Antibody Pair, PBS Only. Capture antibody: 85071-2-PBS. Detection antibody: 85071-5-PBS. Standard: Eg2956. Range: 0.781-100 ng/mL.