

# Mouse IL-1R2 Recombinant Matched Antibody Pair, PBS Only

Catalog Number: **MP01814-3**

## Capture Antibody Information

<b>Catalog Number:</b> 85071-2-PBS	<b>Clone ID:</b> 242602C2	<b>Conjugate:</b> Unconjugated
<b>Host:</b> Rabbit	<b>Reactivity:</b> mouse	<b>Full name:</b> interleukin 1 receptor, type II
<b>Isotype:</b> IgG	<b>GenBank:</b> NM_010555.4	<b>Gene ID:</b> 16178
<b>Purification Method:</b> Protein A purification	<b>Immunogen Catalog Number:</b> Eg2956	

## Detection Antibody Information

<b>Catalog Number:</b> 85071-4-PBS	<b>Clone ID:</b> 242602B1	<b>Conjugate:</b> Unconjugated
<b>Host:</b> Rabbit	<b>Reactivity:</b> mouse	<b>Full name:</b> interleukin 1 receptor, type II
<b>Isotype:</b> IgG	<b>GenBank:</b> NM_010555.4	<b>Gene ID:</b> 16178
<b>Purification Method:</b> Protein A purification	<b>Immunogen Catalog Number:</b> Eg2956	

## Applications

<b>Tested Applications:</b> Sandwich ELISA	<b>Range:</b> 39.1-2500 pg/mL (Sandwich ELISA)	<b>Recommended Dilutions:</b> It is recommended that this reagent should be titrated in each testing system to obtain optimal results.
---	---	---

## Product Information

MP01814-3 targets IL-1R2 in immunoassays as a matched antibody pair. Validated in Sandwich ELISA.

Capture antibody: Mouse IL1r2 Recombinant antibody, PBS Only (Capture) 85071-2-PBS (242602C2). 100 µg. Concentration 1 mg/mL.

Detection antibody: Mouse IL1r2 Recombinant antibody, PBS Only (Detector) 85071-4-PBS (242602B1). 100 µg. Concentration 1 mg/mL.

Unconjugated rabbit recombinant monoclonal antibody pair in PBS only storage buffer at a concentration of 1 mg/mL, ready for conjugation. Created using Proteintech's proprietary in-house recombinant technology. Recombinant production enables unrivalled batch-to-batch consistency, easy scale-up, and future security of supply.

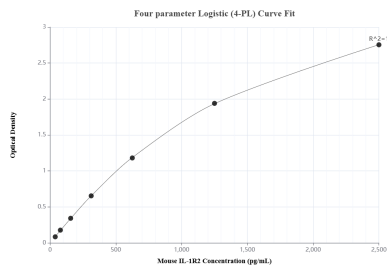
Matched antibody pairs are designed for use in a variety of assays and platforms that require matched antibody pairs.

Antibody use should be optimized for each application and assay.

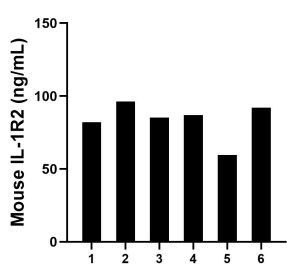
## Storage

**Storage:**  
Store at -80°C.  
**The product is shipped with ice packs. Upon receipt, store it immediately at -80°C**  
**Storage buffer:**  
PBS only

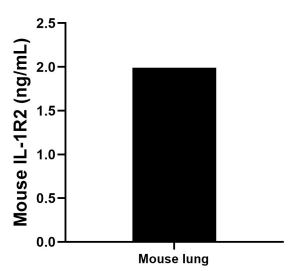
## Selected Validation Data



Sandwich ELISA standard curve of MP01814-3, Mouse IL-1R2 Recombinant Matched Antibody Pair - PBS only. 85071-2-PBS was coated to a plate as the capture antibody and incubated with serial dilutions of standard Eg2956. 85071-4-PBS was HRP conjugated as the detection antibody. Range: 39.1-2500 pg/mL



Serum of six mice was measured. The IL-1R2 concentration of detected samples was determined to be 83.6 ng/mL with a range of 59.6-96.2 ng/mL.



The mean IL-1R2 concentration was determined to be 2.0 ng/mL in mouse lung tissue extract based on a 5.3 mg/mL extract load.