

YBX1 Recombinant Matched Antibody Pair, PBS Only

Catalog Number:MP01766-1

Capture Antibody Information

Catalog Number: 84993-2-PBS	Clone ID: 242462D2	Conjugate: Unconjugated
Host: Rabbit	Reactivity: human	Full name: Y box binding protein 1
Isotype: IgG	GenBank: BC010430	Gene ID: 4904
Purification Method: Protein A purification	Immunogen Catalog Number: Ag14129	

Detection Antibody Information

Catalog Number: 84993-3-PBS	Clone ID: 242462G1	Conjugate: Unconjugated
Host: Rabbit	Reactivity: human	Full name: Y box binding protein 1
Isotype: IgG	GenBank: BC010430	Gene ID: 4904
Purification Method: Protein A purification	Immunogen Catalog Number: Ag14129	

Applications

Tested Applications: Cytometric bead array, Sandwich ELISA	Range: 1.563-200 ng/mL (Cytometric Bead Array) 39.1-2500 pg/mL (Sandwich ELISA)	Recommended Dilutions: It is recommended that this reagent should be titrated in each testing system to obtain optimal results.
---	---	--

Product Information

MP01766-1 targets YBX1 in immunoassays as a matched antibody pair. Validated in Cytometric bead array, Sandwich ELISA.

Capture antibody: YBX1 Recombinant antibody, PBS Only (Capture) 84993-2-PBS (242462D2). 100 µg. Concentration 1 mg/mL.

Detection antibody: YBX1 Recombinant antibody, PBS Only (Detector) 84993-3-PBS (242462G1). 100 µg. Concentration 1 mg/mL.

Unconjugated rabbit recombinant monoclonal antibody pair in PBS only storage buffer at a concentration of 1 mg/mL, ready for conjugation. Created using Proteintech's proprietary in-house recombinant technology. Recombinant production enables unrivalled batch-to-batch consistency, easy scale-up, and future security of supply.

Matched antibody pairs are designed for use in a variety of assays and platforms that require matched antibody pairs.

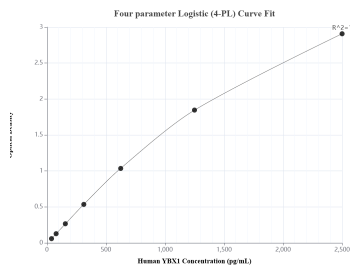
Antibody use should be optimized for each application and assay.

Storage

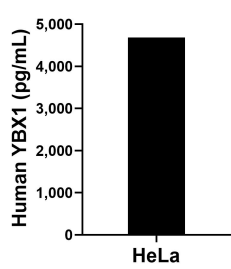
Storage:
Store at -80°C.
The product is shipped with ice packs. Upon receipt, store it immediately at -80°C

Storage buffer:
PBS only

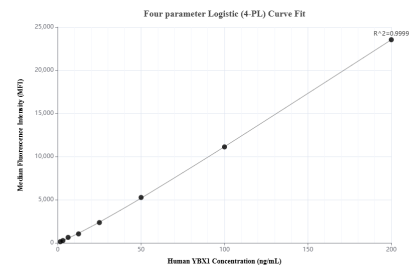
Selected Validation Data



Sandwich ELISA standard curve of MP01766-1, Human YBX1 Recombinant Matched Antibody Pair - PBS only. 84993-2-PBS was coated to a plate as the capture antibody and incubated with serial dilutions of standard Ag14129. 84993-3-PBS was HRP conjugated as the detection antibody. Range: 39.1-2500 pg/mL



The mean YBX1 concentration was determined to be 4,684.7 pg/mL in HeLa cell extract based on a 1.3 mg/mL extract load.



Cytometric bead array standard curve of MP01766-1, YBX1 Recombinant Matched Antibody Pair, PBS Only. Capture antibody: 84993-2-PBS. Detection antibody: 84993-3-PBS. Standard: Ag14129. Range: 1.563-200 ng/mL