

# SLC27A6 Recombinant Matched Antibody Pair, PBS Only

Catalog Number: **MP01755-2**

## Capture Antibody Information

**Catalog Number:**  
84995-1-PBS

**Host:**  
Rabbit

**Isotype:**  
IgG

**Purification Method:**  
Protein A purification

**Clone ID:**  
242542F8

**Reactivity:**  
human

**GenBank:**  
BC041945

**Immunogen Catalog Number:**  
Ag32179

**Conjugate:**  
Unconjugated

**Full name:**  
solute carrier family 27 (fatty acid transporter), member 6

**Gene ID:**  
28965

## Detection Antibody Information

**Catalog Number:**  
84995-2-PBS

**Host:**  
Rabbit

**Isotype:**  
IgG

**Purification Method:**  
Protein A purification

**Clone ID:**  
242542G4

**Reactivity:**  
human

**GenBank:**  
BC041945

**Immunogen Catalog Number:**  
Ag32179

**Conjugate:**  
Unconjugated

**Full name:**  
solute carrier family 27 (fatty acid transporter), member 6

**Gene ID:**  
28965

## Applications

**Tested Applications:**  
Cytometric bead array, Sandwich ELISA

**Range:**  
0.781-100 ng/mL (Cytometric Bead Array)  
0.781-50 ng/mL (Sandwich ELISA)

**Recommended Dilutions:**  
It is recommended that this reagent should be titrated in each testing system to obtain optimal results.

## Product Information

MP01755-2 targets SLC27A6 in immunoassays as a matched antibody pair. Validated in Cytometric bead array, Sandwich ELISA.

Capture antibody: SLC27A6 Recombinant antibody, PBS Only (Capture) 84995-1-PBS (242542F8). 100 µg. Concentration 1 mg/mL.

Detection antibody: SLC27A6 Recombinant antibody, PBS Only (Detector) 84995-2-PBS (242542G4). 100 µg. Concentration 1 mg/mL.

Unconjugated rabbit recombinant monoclonal antibody pair in PBS only storage buffer at a concentration of 1 mg/mL, ready for conjugation. Created using Proteintech's proprietary in-house recombinant technology. Recombinant production enables unrivalled batch-to-batch consistency, easy scale-up, and future security of supply.

Matched antibody pairs are designed for use in a variety of assays and platforms that require matched antibody pairs.

Antibody use should be optimized for each application and assay.

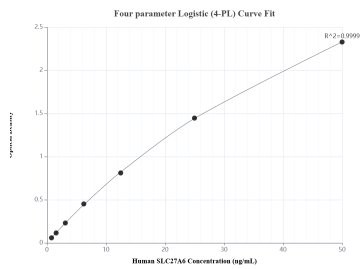
## Storage

**Storage:**  
Store at -80°C.

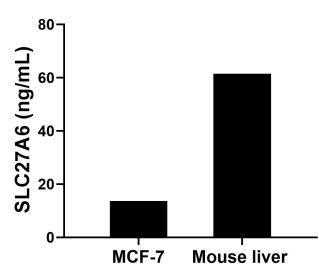
**The product is shipped with ice packs. Upon receipt, store it immediately at -80°C**

**Storage buffer:**  
PBS only

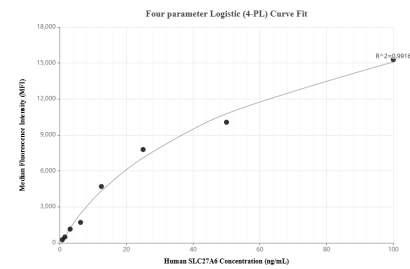
## Selected Validation Data



Sandwich ELISA standard curve of MP01755-2, Human SLC27A6 Recombinant Matched Antibody Pair - PBS only. 84995-1-PBS was coated to a plate as the capture antibody and incubated with serial dilutions of standard Ag32179. 84995-2-PBS was HRP conjugated as the detection antibody. Range: 0.781-50 ng/mL



The mean SLC27A6 concentration was determined to be 13.71 ng/mL in MCF-7 cell extract based on a 1.20 mg/mL extract load and 61.53 ng/mL in mouse liver tissue extract based on a 3.70 mg/mL extract load.



Cytometric bead array standard curve of MP01755-2, SLC27A6 Recombinant Matched Antibody Pair, PBS Only. Capture antibody: 84995-1-PBS. Detection antibody: 84995-2-PBS. Standard: Ag32179. Range: 0.781-100 ng/mL