

# RPS4X Recombinant Matched Antibody Pair, PBS Only

Catalog Number: **MP01754-3**

## Capture Antibody Information

Catalog Number: 85040-4-PBS	Clone ID: 242697H7	Conjugate: Unconjugated
Host: Rabbit	Reactivity: human	Full name: ribosomal protein S4, X-linked
Isotype: IgG	GenBank: BC000472	Gene ID: 6191
Purification Method: Protein A purification	Immunogen Catalog Number: Ag6513	

## Detection Antibody Information

Catalog Number: 85040-2-PBS	Clone ID: 242697F1	Conjugate: Unconjugated
Host: Rabbit	Reactivity: human	Full name: ribosomal protein S4, X-linked
Isotype: IgG	GenBank: BC000472	Gene ID: 6191
Purification Method: Protein A purification	Immunogen Catalog Number: Ag6513	

## Applications

Tested Applications: Sandwich ELISA	Range: 0.391-25 ng/mL (Sandwich ELISA)	Recommended Dilutions: It is recommended that this reagent should be titrated in each testing system to obtain optimal results.
--	---	--

## Product Information

MP01754-3 targets RPS4X in immunoassays as a matched antibody pair. Validated in Sandwich ELISA.

Capture antibody: RPS4X Recombinant antibody, PBS Only (Capture) 85040-4-PBS (242697H7). 100 µg. Concentration 1 mg/mL.

Detection antibody: RPS4X Recombinant antibody, PBS Only (Detector) 85040-2-PBS (242697F1). 100 µg. Concentration 1 mg/mL.

Unconjugated rabbit recombinant monoclonal antibody pair in PBS only storage buffer at a concentration of 1 mg/mL, ready for conjugation. Created using Proteintech's proprietary in-house recombinant technology. Recombinant production enables unrivalled batch-to-batch consistency, easy scale-up, and future security of supply.

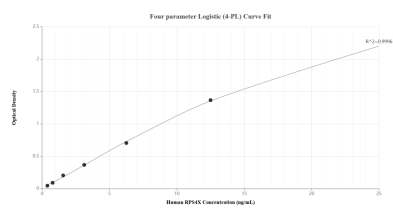
Matched antibody pairs are designed for use in a variety of assays and platforms that require matched antibody pairs.

Antibody use should be optimized for each application and assay.

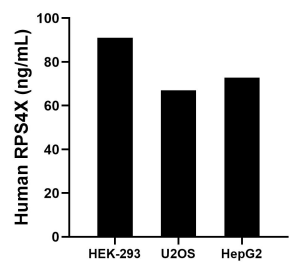
## Storage

Storage:  
Store at -80°C.  
**The product is shipped with ice packs. Upon receipt, store it immediately at -80°C**  
Storage buffer:  
PBS only

## Selected Validation Data



Sandwich ELISA standard curve of MP01754-3, Human RPS4X Recombinant Matched Antibody Pair - PBS only. 85040-4-PBS was coated to a plate as the capture antibody and incubated with serial dilutions of standard Ag6513. 85040-2-PBS was HRP conjugated as the detection antibody. Range: 0.391-25 ng/mL



The mean RPS4X concentration was determined to be 91.01 ng/mL in HEK-293 cell extract based on a 2.70 mg/mL extract load, 66.99 ng/mL in U2OS cell extract based on a 1.40 mg/mL extract load and 72.80 ng/mL in HepG2 cell extract based on a 2.30 mg/mL extract load.