

ATP1A2 Recombinant Matched Antibody Pair, PBS Only

Catalog Number: **MP01738-1**

Capture Antibody Information

Catalog Number:
84999-3-PBS
Host:
Rabbit
Isotype:
IgG
Purification Method:
Protein A purification

Clone ID:
242414G10
Reactivity:
human
GenBank:
BC052271
Immunogen Catalog Number:
Ag10489

Conjugate:
Unconjugated
Full name:
ATPase, Na⁺/K⁺ transporting, alpha 2 (+) polypeptide
Gene ID:
477

Detection Antibody Information

Catalog Number:
84999-2-PBS
Host:
Rabbit
Isotype:
IgG
Purification Method:
Protein A purification

Clone ID:
242414F5
Reactivity:
human
GenBank:
BC052271
Immunogen Catalog Number:
Ag10489

Conjugate:
Unconjugated
Full name:
ATPase, Na⁺/K⁺ transporting, alpha 2 (+) polypeptide
Gene ID:
477

Applications

Tested Applications:
Cytometric bead array, Sandwich ELISA

Range:
0.938-60 ng/mL (Cytometric Bead Array)
0.391-25 ng/mL (Sandwich ELISA)

Recommended Dilutions:
It is recommended that this reagent should be titrated in each testing system to obtain optimal results.

Product Information

MP01738-1 targets ATP1A2 in immunoassays as a matched antibody pair. Validated in Cytometric bead array, Sandwich ELISA.

Capture antibody: ATP1A2 Recombinant antibody, PBS Only (Capture) 84999-3-PBS (242414G10). 100 µg. Concentration 1 mg/mL.

Detection antibody: ATP1A2 Recombinant antibody, PBS Only (Detector) 84999-2-PBS (242414F5). 100 µg. Concentration 1 mg/mL.

Unconjugated rabbit recombinant monoclonal antibody pair in PBS only storage buffer at a concentration of 1 mg/mL, ready for conjugation. Created using Proteintech's proprietary in-house recombinant technology. Recombinant production enables unrivalled batch-to-batch consistency, easy scale-up, and future security of supply.

Matched antibody pairs are designed for use in a variety of assays and platforms that require matched antibody pairs.

Antibody use should be optimized for each application and assay.

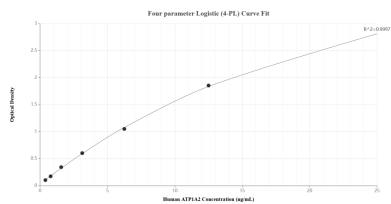
Storage

Storage:
Store at -80°C.

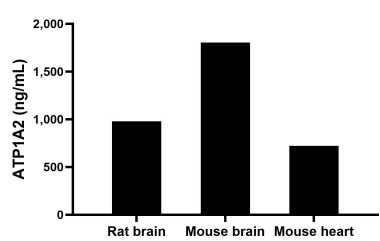
The product is shipped with ice packs. Upon receipt, store it immediately at -80°C

Storage buffer:
PBS only

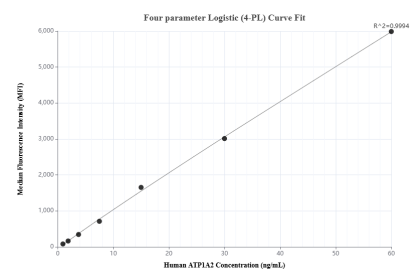
Selected Validation Data



Sandwich ELISA standard curve of MP01738-1, Human ATP1A2 Recombinant Matched Antibody Pair - PBS only. 84999-3-PBS was coated to a plate as the capture antibody and incubated with serial dilutions of standard Ag10489. 84999-2-PBS was HRP conjugated as the detection antibody. Range: 0.391-25 ng/mL.



The mean ATP1A2 concentration was determined to be 976.80 ng/mL in rat brain tissue extract based on a 1.60 mg/mL extract load, 1,802.51 ng/mL in mouse brain tissue extract based on a 2.20 mg/mL extract load and 719.92 ng/mL in mouse heart tissue extract based on a 1.40 mg/mL extract load.



Cytometric bead array standard curve of MP01738-1, ATP1A2 Recombinant Matched Antibody Pair, PBS Only. Capture antibody: 84999-3-PBS. Detection antibody: 84999-2-PBS. Standard: Ag10489. Range: 0.938-60 ng/mL.