

RCN2 Recombinant Matched Antibody Pair, PBS Only

Catalog Number: **MP01713-1**

Capture Antibody Information

Catalog Number: 84956-3-PBS	Clone ID: 242612H8	Conjugate: Unconjugated
Host: Rabbit	Reactivity: human	Full name: reticulocalbin 2, EF-hand calcium binding domain
Isotype: IgG	GenBank: BC004892	Gene ID: 5955
Purification Method: Protein A purification	Immunogen Catalog Number: Ag0247	

Detection Antibody Information

Catalog Number: 84956-2-PBS	Clone ID: 242612D10	Conjugate: Unconjugated
Host: Rabbit	Reactivity: human	Full name: reticulocalbin 2, EF-hand calcium binding domain
Isotype: IgG	GenBank: BC004892	Gene ID: 5955
Purification Method: Protein A purification	Immunogen Catalog Number: Ag0247	

Applications

Tested Applications: Cytometric bead array, Sandwich ELISA	Range: 0.469-60 ng/mL (Cytometric Bead Array) 78.1-5000 pg/mL (Sandwich ELISA)	Recommended Dilutions: It is recommended that this reagent should be titrated in each testing system to obtain optimal results.
--	---	---

Product Information

MP01713-1 targets RCN2 in immunoassays as a matched antibody pair. Validated in Cytometric bead array, Sandwich ELISA.

Capture antibody: RCN2 Recombinant antibody, PBS Only (Capture) 84956-3-PBS (242612H8). 100 µg. Concentration 1 mg/mL.

Detection antibody: RCN2 Recombinant antibody, PBS Only (Detector) 84956-2-PBS (242612D10). 100 µg. Concentration 1 mg/mL.

Unconjugated rabbit recombinant monoclonal antibody pair in PBS only storage buffer at a concentration of 1 mg/mL, ready for conjugation. Created using Proteintech's proprietary in-house recombinant technology. Recombinant production enables unrivalled batch-to-batch consistency, easy scale-up, and future security of supply.

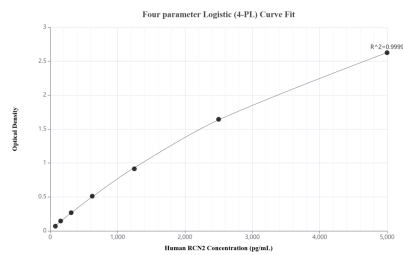
Matched antibody pairs are designed for use in a variety of assays and platforms that require matched antibody pairs.

Antibody use should be optimized for each application and assay.

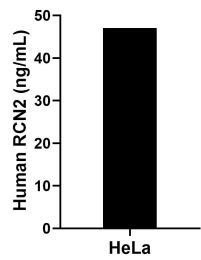
Storage

Storage:
Store at -80°C.
The product is shipped with ice packs. Upon receipt, store it immediately at -80°C
Storage buffer:
PBS only

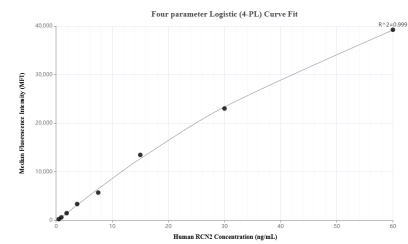
Selected Validation Data



Sandwich ELISA standard curve of MP01713-1, Human RCN2 Recombinant Matched Antibody Pair - PBS only. 84956-3-PBS was coated to a plate as the capture antibody and incubated with serial dilutions of standard Ag0247. 84956-2-PBS was HRP conjugated as the detection antibody. Range: 78.1-5000 pg/mL



The mean RCN2 concentration was determined to be 47.0 pg/mL in HeLa cell extract based on a 1.8 mg/mL extract load.



Cytometric bead array standard curve of MP01713-1, RCN2 Recombinant Matched Antibody Pair, PBS Only. Capture antibody: 84956-3-PBS. Detection antibody: 84956-2-PBS. Standard: Ag0247. Range: 0.469-60 ng/mL