

# TYRO3 Recombinant Matched Antibody Pair, PBS Only

Catalog Number: **MP01701-3**

## Capture Antibody Information

<b>Catalog Number:</b> 84929-4-PBS	<b>Clone ID:</b> 242477E1	<b>Conjugate:</b> Unconjugated
<b>Host:</b> Rabbit	<b>Reactivity:</b> human	<b>Full name:</b> TYRO3 protein tyrosine kinase
<b>Isotype:</b> IgG	<b>GenBank:</b> BC049368	<b>Gene ID:</b> 7301
<b>Purification Method:</b> Protein A purification	<b>Immunogen Catalog Number:</b> Ag29527	

## Detection Antibody Information

<b>Catalog Number:</b> 84929-5-PBS	<b>Clone ID:</b> 242477E12	<b>Conjugate:</b> Unconjugated
<b>Host:</b> Rabbit	<b>Reactivity:</b> human	<b>Full name:</b> TYRO3 protein tyrosine kinase
<b>Isotype:</b> IgG	<b>GenBank:</b> BC049368	<b>Gene ID:</b> 7301
<b>Purification Method:</b> Protein A purification	<b>Immunogen Catalog Number:</b> Ag29527	

## Applications

<b>Tested Applications:</b> Sandwich ELISA	<b>Range:</b> 0.781-50 ng/mL (Sandwich ELISA)	<b>Recommended Dilutions:</b> It is recommended that this reagent should be titrated in each testing system to obtain optimal results.
---	--	---

## Product Information

MP01701-3 targets TYRO3 in immunoassays as a matched antibody pair. Validated in Sandwich ELISA.

Capture antibody: TYRO3 Recombinant antibody, PBS Only (Capture) 84929-4-PBS (242477E1). 100 µg. Concentration 1 mg/mL.

Detection antibody: TYRO3 Recombinant antibody, PBS Only (Detector) 84929-5-PBS (242477E12). 100 µg. Concentration 1 mg/mL.

Unconjugated rabbit recombinant monoclonal antibody pair in PBS only storage buffer at a concentration of 1 mg/mL, ready for conjugation. Created using Proteintech's proprietary in-house recombinant technology. Recombinant production enables unrivalled batch-to-batch consistency, easy scale-up, and future security of supply.

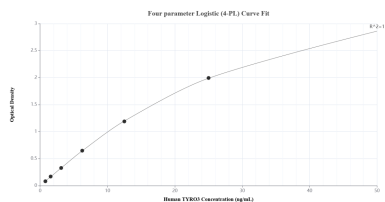
Matched antibody pairs are designed for use in a variety of assays and platforms that require matched antibody pairs.

Antibody use should be optimized for each application and assay.

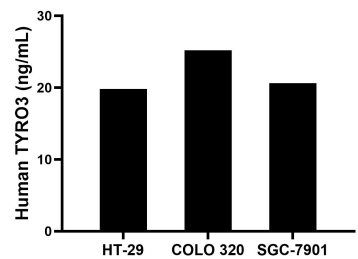
## Storage

**Storage:**  
Store at -80°C.  
**The product is shipped with ice packs. Upon receipt, store it immediately at -80°C**  
**Storage buffer:**  
PBS only

## Selected Validation Data



Sandwich ELISA standard curve of MP01701-3, Human TYRO3 Recombinant Matched Antibody Pair - PBS only. 84929-4-PBS was coated to a plate as the capture antibody and incubated with serial dilutions of standard Ag29527. 84929-5-PBS was HRP conjugated as the detection antibody. Range: 0.781-50 ng/mL.



The mean TYRO3 concentration was determined to be 19.82 ng/mL in HT-29 cell extract based on a 1.50 mg/mL extract load, 25.19 ng/mL in COLO 320 cell extract based on a 1.40 mg/mL extract load and 20.61 ng/mL in SGC-7901 cell extract based on a 1.60 mg/mL extract load.