

LARP7 Recombinant Matched Antibody Pair, PBS Only

Catalog Number: **MP01697-2**

Capture Antibody Information

Catalog Number: 84950-3-PBS	Clone ID: 242561F5	Conjugate: Unconjugated
Host: Rabbit	Reactivity: human	Full name: La ribonucleoprotein domain family, member 7
Isotype: IgG	GenBank: BC006981	Gene ID: 51574
Purification Method: Protein A purification	Immunogen Catalog Number: Ag10850	

Detection Antibody Information

Catalog Number: 84950-1-PBS	Clone ID: 242561C5	Conjugate: Unconjugated
Host: Rabbit	Reactivity: human	Full name: La ribonucleoprotein domain family, member 7
Isotype: IgG	GenBank: BC006981	Gene ID: 51574
Purification Method: Protein A purification	Immunogen Catalog Number: Ag10850	

Applications

Tested Applications: Cytometric bead array	Range: 1.563-100 ng/mL (Cytometric Bead Array)	Recommended Dilutions: It is recommended that this reagent should be titrated in each testing system to obtain optimal results.
--	--	---

Product Information

MP01697-2 targets LARP7 in immunoassays as a matched antibody pair. Validated in Cytometric bead array.

Capture antibody: LARP7 Recombinant antibody, PBS Only (Capture) 84950-3-PBS (242561F5). 100 µg. Concentration 1 mg/mL.

Detection antibody: LARP7 Recombinant antibody, PBS Only (Detector) 84950-1-PBS (242561C5). 100 µg. Concentration 1 mg/mL.

Unconjugated rabbit recombinant monoclonal antibody pair in PBS only storage buffer at a concentration of 1 mg/mL, ready for conjugation. Created using Proteintech's proprietary in-house recombinant technology. Recombinant production enables unrivalled batch-to-batch consistency, easy scale-up, and future security of supply.

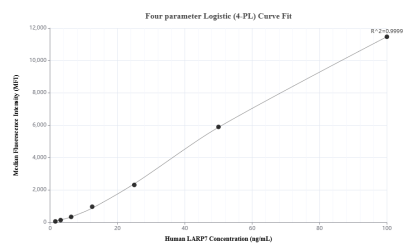
Matched antibody pairs are designed for use in a variety of assays and platforms that require matched antibody pairs.

Antibody use should be optimized for each application and assay.

Storage

Storage:
Store at -80°C.
The product is shipped with ice packs. Upon receipt, store it immediately at -80°C
Storage buffer:
PBS only

Selected Validation Data



Cytometric bead array standard curve of MP01697-2, LARP7 Recombinant Matched Antibody Pair, PBS Only. Capture antibody: 84950-3-PBS. Detection antibody: 84950-1-PBS. Standard: Ag10850. Range: 1.563-100 ng/mL.