

# JUNB Recombinant Matched Antibody Pair, PBS Only

Catalog Number: **MP01695-3**

## Capture Antibody Information

<b>Catalog Number:</b> 84922-3-PBS	<b>Clone ID:</b> 242562F9	<b>Conjugate:</b> Unconjugated
<b>Host:</b> Rabbit	<b>Reactivity:</b> human	<b>Full name:</b> jun B proto-oncogene
<b>Isotype:</b> IgG	<b>GenBank:</b> BC004250	<b>Gene ID:</b> 3726
<b>Purification Method:</b> Protein A purification	<b>Immunogen Catalog Number:</b> Ag0752	

## Detection Antibody Information

<b>Catalog Number:</b> 84922-4-PBS	<b>Clone ID:</b> 242562E9	<b>Conjugate:</b> Unconjugated
<b>Host:</b> Rabbit	<b>Reactivity:</b> human	<b>Full name:</b> jun B proto-oncogene
<b>Isotype:</b> IgG	<b>GenBank:</b> BC004250	<b>Gene ID:</b> 3726
<b>Purification Method:</b> Protein A purification	<b>Immunogen Catalog Number:</b> Ag0752	

## Applications

<b>Tested Applications:</b> Sandwich ELISA	<b>Range:</b> 39.1-2500 pg/mL (Sandwich ELISA)	<b>Recommended Dilutions:</b> It is recommended that this reagent should be titrated in each testing system to obtain optimal results.
---	---	---

## Product Information

MP01695-3 targets JUNB in immunoassays as a matched antibody pair. Validated in Sandwich ELISA.

Capture antibody: JUNB Recombinant antibody, PBS Only (Capture) 84922-3-PBS (242562F9). 100 µg. Concentration 1 mg/mL.

Detection antibody: JUNB Recombinant antibody, PBS Only (Detector) 84922-4-PBS (242562E9). 100 µg. Concentration 1 mg/mL.

Unconjugated rabbit recombinant monoclonal antibody pair in PBS only storage buffer at a concentration of 1 mg/mL, ready for conjugation. Created using Proteintech's proprietary in-house recombinant technology. Recombinant production enables unrivalled batch-to-batch consistency, easy scale-up, and future security of supply.

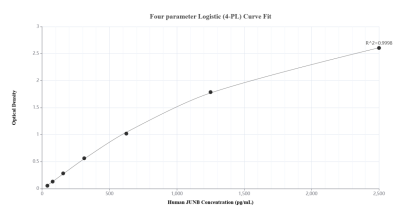
Matched antibody pairs are designed for use in a variety of assays and platforms that require matched antibody pairs.

Antibody use should be optimized for each application and assay.

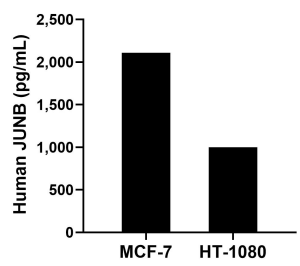
## Storage

**Storage:**  
Store at -80°C.  
**The product is shipped with ice packs. Upon receipt, store it immediately at -80°C**  
**Storage buffer:**  
PBS only

## Selected Validation Data



Sandwich ELISA standard curve of MP01695-3, Human JUNB Recombinant Matched Antibody Pair - PBS only. 84922-3-PBS was coated to a plate as the capture antibody and incubated with serial dilutions of standard Ag0752. 84922-4-PBS was HRP conjugated as the detection antibody. Range: 39.1-2500 pg/mL.



The mean JUNB concentration was determined to be 2,110.1 pg/mL in MCF-7 cell extract based on a 1.2 mg/mL extract load and 998.0 ng/mL in HT-1080 cell extract based on a 1.4 mg/mL extract load.