

# MEK2 Recombinant Matched Antibody Pair, PBS Only

Catalog Number: **MP01692-1**

## Capture Antibody Information

**Catalog Number:**  
84967-2-PBS

**Host:**  
Rabbit

**Isotype:**  
IgG

**Purification Method:**  
Protein A purification

**Clone ID:**  
242614G5

**Reactivity:**  
human

**GenBank:**  
BC018645

**Immunogen Catalog Number:**  
Ag1481

**Conjugate:**  
Unconjugated

**Full name:**  
mitogen-activated protein kinase kinase 2

**Gene ID:**  
5605

## Detection Antibody Information

**Catalog Number:**  
84967-1-PBS

**Host:**  
Rabbit

**Isotype:**  
IgG

**Purification Method:**  
Protein A purification

**Clone ID:**  
242614G3

**Reactivity:**  
human

**GenBank:**  
BC018645

**Immunogen Catalog Number:**  
Ag1481

**Conjugate:**  
Unconjugated

**Full name:**  
mitogen-activated protein kinase kinase 2

**Gene ID:**  
5605

## Applications

**Tested Applications:**  
Cytometric bead array, Sandwich ELISA

**Range:**  
0.625-80 ng/mL (Cytometric Bead Array)  
0.781-50 ng/mL (Sandwich ELISA)

**Recommended Dilutions:**  
It is recommended that this reagent should be titrated in each testing system to obtain optimal results.

## Product Information

MP01692-1 targets MEK2 in immunoassays as a matched antibody pair. Validated in Cytometric bead array, Sandwich ELISA.

Capture antibody: MAP2K2 Recombinant antibody, PBS Only (Capture) 84967-2-PBS (242614G5). 100 µg. Concentration 1 mg/mL.

Detection antibody: MAP2K2 Recombinant antibody, PBS Only (Capture/Detector) 84967-1-PBS (242614G3). 100 µg. Concentration 1 mg/mL.

Unconjugated rabbit recombinant monoclonal antibody pair in PBS only storage buffer at a concentration of 1 mg/mL, ready for conjugation. Created using Proteintech's proprietary in-house recombinant technology. Recombinant production enables unrivalled batch-to-batch consistency, easy scale-up, and future security of supply.

Matched antibody pairs are designed for use in a variety of assays and platforms that require matched antibody pairs.

Antibody use should be optimized for each application and assay.

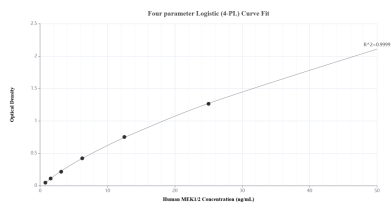
## Storage

**Storage:**  
Store at -80°C.

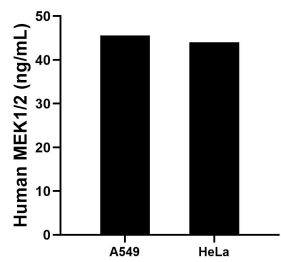
**The product is shipped with ice packs. Upon receipt, store it immediately at -80°C**

**Storage buffer:**  
PBS only

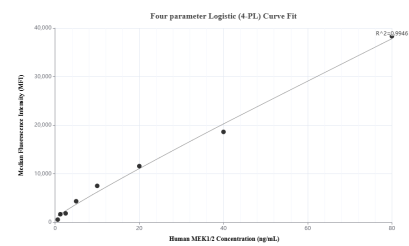
## Selected Validation Data



Sandwich ELISA standard curve of MP01692-1, Human MEK2 Recombinant Matched Antibody Pair - PBS only. 84967-2-PBS was coated to a plate as the capture antibody and incubated with serial dilutions of standard Ag1481. 84967-1-PBS was HRP conjugated as the detection antibody. Range: 0.781-50 ng/mL



The mean MEK2 concentration was determined to be 45.61 ng/mL in A549 cell extract based on a 1.50 mg/mL extract load and 44.07 ng/mL in HeLa cell extract based on a 1.00 mg/mL extract load.



Cytometric bead array standard curve of MP01692-1, MEK2 Recombinant Matched Antibody Pair, PBS Only. Capture antibody: 84967-2-PBS. Detection antibody: 84967-1-PBS. Standard: Ag1481. Range: 0.625-80 ng/mL