

# PSMC3IP Recombinant Matched Antibody Pair, PBS Only

Catalog Number: **MP01685-2**

## Capture Antibody Information

<b>Catalog Number:</b> 84934-3-PBS	<b>Clone ID:</b> 242517E3	<b>Conjugate:</b> Unconjugated
<b>Host:</b> Rabbit	<b>Reactivity:</b> human	<b>Full name:</b> PSMC3 interacting protein
<b>Isotype:</b> IgG	<b>GenBank:</b> BC008792	<b>Gene ID:</b> 29893
<b>Purification Method:</b> Protein A purification	<b>Immunogen Catalog Number:</b> Ag1883	

## Detection Antibody Information

<b>Catalog Number:</b> 84934-2-PBS	<b>Clone ID:</b> 242517D2	<b>Conjugate:</b> Unconjugated
<b>Host:</b> Rabbit	<b>Reactivity:</b> human	<b>Full name:</b> PSMC3 interacting protein
<b>Isotype:</b> IgG	<b>GenBank:</b> BC008792	<b>Gene ID:</b> 29893
<b>Purification Method:</b> Protein A purification	<b>Immunogen Catalog Number:</b> Ag1883	

## Applications

<b>Tested Applications:</b> Cytometric bead array, Sandwich ELISA	<b>Range:</b> 0.625-80 ng/mL (Cytometric Bead Array) 39.1-2500 pg/mL (Sandwich ELISA)	<b>Recommended Dilutions:</b> It is recommended that this reagent should be titrated in each testing system to obtain optimal results.
--	---	---

## Product Information

MP01685-2 targets PSMC3IP in immunoassays as a matched antibody pair. Validated in Cytometric bead array, Sandwich ELISA.

Capture antibody: PSMC3IP Recombinant antibody, PBS Only (Capture) 84934-3-PBS (242517E3). 100 µg. Concentration 1 mg/mL.

Detection antibody: PSMC3IP Recombinant antibody, PBS Only (Detector) 84934-2-PBS (242517D2). 100 µg. Concentration 1 mg/mL.

Unconjugated rabbit recombinant monoclonal antibody pair in PBS only storage buffer at a concentration of 1 mg/mL, ready for conjugation. Created using Proteintech's proprietary in-house recombinant technology. Recombinant production enables unrivalled batch-to-batch consistency, easy scale-up, and future security of supply.

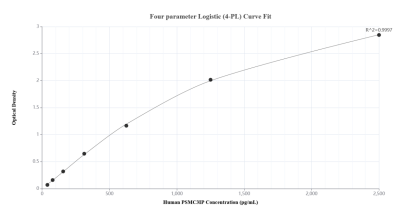
Matched antibody pairs are designed for use in a variety of assays and platforms that require matched antibody pairs.

Antibody use should be optimized for each application and assay.

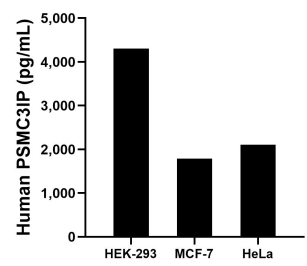
## Storage

**Storage:**  
Store at -80°C.  
**The product is shipped with ice packs. Upon receipt, store it immediately at -80°C**  
**Storage buffer:**  
PBS only

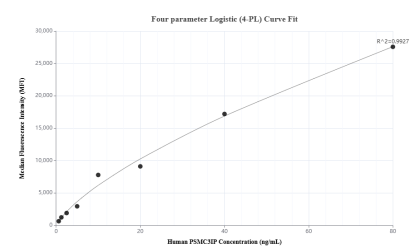
## Selected Validation Data



Sandwich ELISA standard curve of MP01685-2, Human PSMC3IP Recombinant Matched Antibody Pair - PBS only. 84934-3-PBS was coated to a plate as the capture antibody and incubated with serial dilutions of standard Ag1883. 84934-2-PBS was HRP conjugated as the detection antibody. Range: 39.1-2500 pg/mL.



The mean PSMC3IP concentration was determined to be 4,307.7 pg/mL in HEK-293 cell extract based on a 2.9 mg/mL extract load, 1,788.5 pg/mL in MCF-7 cell extract based on a 1.2 mg/mL extract load and 2,103.7 pg/mL in HeLa cell extract based on a 1.0 mg/mL extract load.



Cytometric bead array standard curve of MP01685-2, PSMC3IP Recombinant Matched Antibody Pair, PBS Only. Capture antibody: 84934-3-PBS. Detection antibody: 84934-2-PBS. Standard: Ag1883. Range: 0.625-80 ng/mL.