

RAD21 Recombinant Matched Antibody Pair, PBS Only

Catalog Number: **MP01677-2**

Capture Antibody Information

| | | |
|--|--------------------------------------|--|
| Catalog Number: 84920-3-PBS | Clone ID: 242172F1 | Conjugate: Unconjugated |
| Host: Rabbit | Reactivity: human | Full name: RAD21 homolog (S. pombe) |
| Isotype: IgG | GenBank: BC050381 | Gene ID: 5885 |
| Purification Method: Protein A purification | Immunogen Catalog Number: Ag25481 | |

Detection Antibody Information

| | | |
|--|--------------------------------------|--|
| Catalog Number: 84920-1-PBS | Clone ID: 242172A1 | Conjugate: Unconjugated |
| Host: Rabbit | Reactivity: human | Full name: RAD21 homolog (S. pombe) |
| Isotype: IgG | GenBank: BC050381 | Gene ID: 5885 |
| Purification Method: Protein A purification | Immunogen Catalog Number: Ag25481 | |

Applications

| | | |
|---|--|--|
| Tested Applications: Cytometric bead array, Sandwich ELISA | Range: 0.313-40 ng/mL (Cytometric Bead Array) 78.1-5000 pg/mL (Sandwich ELISA) | Recommended Dilutions: It is recommended that this reagent should be titrated in each testing system to obtain optimal results. |
|---|--|--|

Product Information

MP01677-2 targets RAD21 in immunoassays as a matched antibody pair. Validated in Cytometric bead array, Sandwich ELISA.

Capture antibody: RAD21 Recombinant antibody, PBS Only (Capture) 84920-3-PBS (242172F1). 100 µg. Concentration 1 mg/mL.

Detection antibody: RAD21 Recombinant antibody, PBS Only (Detector) 84920-1-PBS (242172A1). 100 µg. Concentration 1 mg/mL.

Unconjugated rabbit recombinant monoclonal antibody pair in PBS only storage buffer at a concentration of 1 mg/mL, ready for conjugation. Created using Proteintech's proprietary in-house recombinant technology. Recombinant production enables unrivalled batch-to-batch consistency, easy scale-up, and future security of supply.

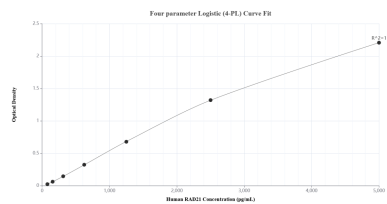
Matched antibody pairs are designed for use in a variety of assays and platforms that require matched antibody pairs.

Antibody use should be optimized for each application and assay.

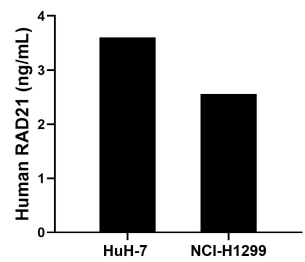
Storage

Storage:
Store at -80°C.
The product is shipped with ice packs. Upon receipt, store it immediately at -80°C
Storage buffer:
PBS only

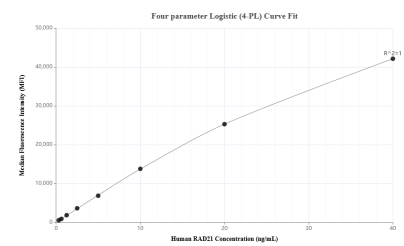
Selected Validation Data



Sandwich ELISA standard curve of MP01677-2, Human RAD21 Recombinant Matched Antibody Pair - PBS only. 84920-3-PBS was coated to a plate as the capture antibody and incubated with serial dilutions of standard Ag25481. 84920-1-PBS was HRP conjugated as the detection antibody. Range: 78.1-5000 pg/mL



The mean RAD21 concentration was determined to be 3.6 ng/mL in HuH-7 cell extract based on a 1.4 mg/mL extract load and 2.6 ng/mL in NCI-H1299 cell extract based on a 1.2 mg/mL extract load.



Cytometric bead array standard curve of MP01677-2, RAD21 Recombinant Matched Antibody Pair, PBS Only. Capture antibody: 84920-3-PBS. Detection antibody: 84920-1-PBS. Standard: Ag25481. Range: 0.313-40 ng/mL