

CNDP2 Recombinant Matched Antibody Pair, PBS Only

Catalog Number: **MP01668-3**

Capture Antibody Information

Catalog Number: 84924-5-PBS	Clone ID: 242373F9	Conjugate: Unconjugated
Host: Rabbit	Reactivity: human	Full name: CNDP dipeptidase 2 (metallopeptidase M20 family)
Isotype: IgG	GenBank: BC001375	Gene ID: 55748
Purification Method: Protein A purification	Immunogen Catalog Number: Ag6684	

Detection Antibody Information

Catalog Number: 84924-4-PBS	Clone ID: 242373D12	Conjugate: Unconjugated
Host: Rabbit	Reactivity: human	Full name: CNDP dipeptidase 2 (metallopeptidase M20 family)
Isotype: IgG	GenBank: BC001375	Gene ID: 55748
Purification Method: Protein A purification	Immunogen Catalog Number: Ag6684	

Applications

Tested Applications: Sandwich ELISA	Range: 0.781-50 ng/mL (Sandwich ELISA)	Recommended Dilutions: It is recommended that this reagent should be titrated in each testing system to obtain optimal results.
---	--	---

Product Information

MP01668-3 targets CNDP2 in immunoassays as a matched antibody pair. Validated in Sandwich ELISA.

Capture antibody: CNDP2 Recombinant antibody, PBS Only (Capture) 84924-5-PBS (242373F9). 100 µg. Concentration 1 mg/mL.

Detection antibody: CNDP2 Recombinant antibody, PBS Only (Detector) 84924-4-PBS (242373D12). 100 µg. Concentration 1 mg/mL.

Unconjugated rabbit recombinant monoclonal antibody pair in PBS only storage buffer at a concentration of 1 mg/mL, ready for conjugation. Created using Proteintech's proprietary in-house recombinant technology. Recombinant production enables unrivalled batch-to-batch consistency, easy scale-up, and future security of supply.

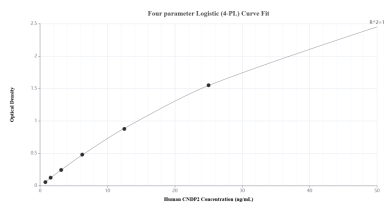
Matched antibody pairs are designed for use in a variety of assays and platforms that require matched antibody pairs.

Antibody use should be optimized for each application and assay.

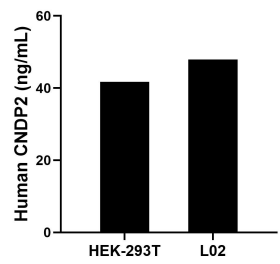
Storage

Storage:
Store at -80°C.
The product is shipped with ice packs. Upon receipt, store it immediately at -80°C
Storage buffer:
PBS only

Selected Validation Data



Sandwich ELISA standard curve of MP01668-3, Human CNDP2 Recombinant Matched Antibody Pair - PBS only. 84924-5-PBS was coated to a plate as the capture antibody and incubated with serial dilutions of standard Ag6684. 84924-4-PBS was HRP conjugated as the detection antibody. Range: 0.781-50 ng/mL



The mean CNDP2 concentration was determined to be 41.75 ng/mL in HEK-293T cell extract based on a 3.20 mg/mL extract load and 47.91 ng/mL in L02 cell extract based on a 1.30 mg/mL extract load.