

APOH Recombinant Matched Antibody Pair, PBS Only

Catalog Number: **MP01667-1**

Capture Antibody Information

Catalog Number:
84943-1-PBS
Host:
Rabbit
Isotype:
IgG
Purification Method:
Protein A purification

Clone ID:
242454B2
Reactivity:
human
GenBank:
NM_000042.2

Conjugate:
Unconjugated
Full name:
apolipoprotein H (beta-2-glycoprotein I)
Gene ID:
350

Detection Antibody Information

Catalog Number:
84943-2-PBS
Host:
Rabbit
Isotype:
IgG
Purification Method:
Protein A purification

Clone ID:
242454E4
Reactivity:
human
GenBank:
NM_000042.2

Conjugate:
Unconjugated
Full name:
apolipoprotein H (beta-2-glycoprotein I)
Gene ID:
350

Applications

Tested Applications:
Cytometric bead array, Sandwich ELISA

Range:
0.625-80 ng/mL (Cytometric Bead Array)
39.1-2500 pg/mL (Sandwich ELISA)

Recommended Dilutions:
It is recommended that this reagent should be titrated in each testing system to obtain optimal results.

Product Information

MP01667-1 targets APOH in immunoassays as a matched antibody pair. Validated in Cytometric bead array, Sandwich ELISA.

Capture antibody: APOH Recombinant antibody, PBS Only (Capture) 84943-1-PBS (242454B2). 100 µg. Concentration 1 mg/mL.

Detection antibody: APOH Recombinant antibody, PBS Only (Detector) 84943-2-PBS (242454E4). 100 µg. Concentration 1 mg/mL.

Unconjugated rabbit recombinant monoclonal antibody pair in PBS only storage buffer at a concentration of 1 mg/mL, ready for conjugation. Created using Proteintech's proprietary in-house recombinant technology. Recombinant production enables unrivalled batch-to-batch consistency, easy scale-up, and future security of supply.

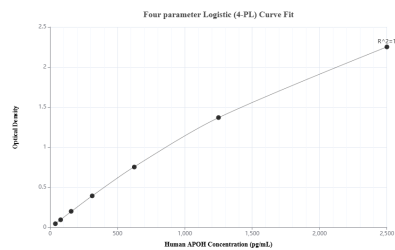
Matched antibody pairs are designed for use in a variety of assays and platforms that require matched antibody pairs.

Antibody use should be optimized for each application and assay.

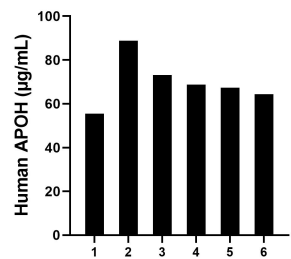
Storage

Storage:
Store at -80°C.
The product is shipped with ice packs. Upon receipt, store it immediately at -80°C
Storage buffer:
PBS only

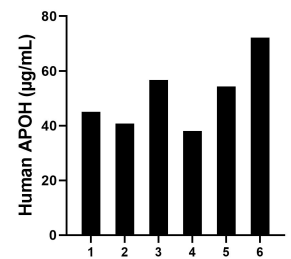
Selected Validation Data



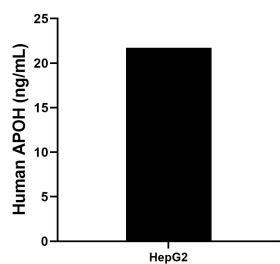
Sandwich ELISA standard curve of MP01667-1, Human APOH Recombinant Matched Antibody Pair - PBS only. 84943-1-PBS was coated to a plate as the capture antibody and incubated with serial dilutions of standard Eg3084. 84943-2-PBS was HRP conjugated as the detection antibody. Range: 39.1-2500 µg/mL



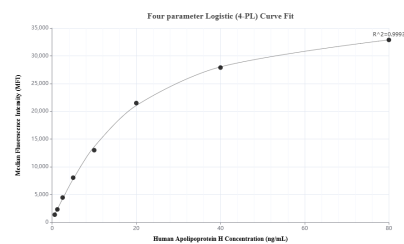
Serum of six individual healthy human donors was measured. The human APOH concentration of detected samples was determined to be 69.62 µg/mL with a range of 55.50 - 88.74 µg/mL



Plasma of six individual healthy human donors was measured. The human APOH concentration of detected samples was determined to be 51.16 µg/mL with a range of 38.03 - 72.18 µg/mL



The mean APOH concentration was determined to be 21.74 ng/mL in HepG2 cell extract based on a 1.0 mg/mL extract load.



Cytometric bead array standard curve of MP01667-1, APOH Recombinant Matched Antibody Pair, PBS Only. Capture antibody: 84943-1-PBS. Detection antibody: 84943-2-PBS. Standard: Eg3084. Range: 0.625-80 ng/mL