

Mouse Galectin-3 Recombinant Matched Antibody Pair, PBS Only

Catalog Number: **MP01641-1**

Capture Antibody Information

Catalog Number:
84889-2-PBS
Host:
Rabbit
Isotype:
IgG
Purification Method:
Protein A purification

Clone ID:
242453E9
Reactivity:
mouse
GenBank:
Immunogen Catalog Number:
Eg1232

Conjugate:
Unconjugated
Full name:
lectin, galactose binding, soluble 3
Gene ID:
16854

Detection Antibody Information

Catalog Number:
84889-3-PBS
Host:
Rabbit
Isotype:
IgG
Purification Method:
Protein A purification

Clone ID:
242453H8
Reactivity:
mouse
GenBank:
Immunogen Catalog Number:
Eg1232

Conjugate:
Unconjugated
Full name:
lectin, galactose binding, soluble 3
Gene ID:
16854

Applications

Tested Applications:
Cytometric bead array, Sandwich ELISA

Range:
0.469-60 ng/mL (Cytometric Bead Array)
9.77-625 pg/mL (Sandwich ELISA)

Recommended Dilutions:
It is recommended that this reagent should be titrated in each testing system to obtain optimal results.

Product Information

MP01641-1 targets Galectin-3 in immunoassays as a matched antibody pair. Validated in Cytometric bead array, Sandwich ELISA.

Capture antibody: Mouse Galectin-3 Recombinant antibody, PBS Only (Capture) 84889-2-PBS (242453E9). 100 µg. Concentration 1 mg/mL.

Detection antibody: Mouse Galectin-3 Recombinant antibody, PBS Only (Detector) 84889-3-PBS (242453H8). 100 µg. Concentration 1 mg/mL.

Unconjugated rabbit recombinant monoclonal antibody pair in PBS only storage buffer at a concentration of 1 mg/mL, ready for conjugation. Created using Proteintech's proprietary in-house recombinant technology. Recombinant production enables unrivalled batch-to-batch consistency, easy scale-up, and future security of supply.

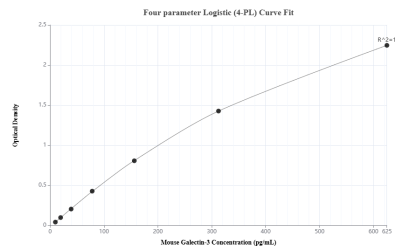
Matched antibody pairs are designed for use in a variety of assays and platforms that require matched antibody pairs.

Antibody use should be optimized for each application and assay.

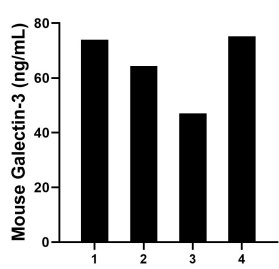
Storage

Storage:
Store at -80°C.
The product is shipped with ice packs. Upon receipt, store it immediately at -80°C
Storage buffer:
PBS only

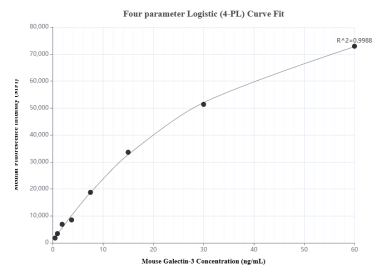
Selected Validation Data



Sandwich ELISA standard curve of MP01641-1, Mouse Galectin-3 Recombinant Matched Antibody Pair - PBS only. 84889-2-PBS was coated to a plate as the capture antibody and incubated with serial dilutions of standard Eg1232. 84889-3-PBS was HRP conjugated as the detection antibody. Range: 9.77-625 pg/mL



Serum of four mice was measured. The mouse Galectin-3 concentration of detected samples was determined to be 65.14 ng/mL with a range of 47.02 - 74.00 ng/mL.



Cytometric bead array standard curve of MP01641-1, MOUSE Galectin-3 Recombinant Matched Antibody Pair, PBS Only. Capture antibody: 84889-2-PBS. Detection antibody: 84889-3-PBS. Standard: Eg1232. Range: 0.469-60 ng/mL