

CHRNA3 Recombinant Matched Antibody Pair, PBS Only

Catalog Number: **MP01633-3**

Capture Antibody Information

Catalog Number: 84860-1-PBS	Clone ID: 242410A7	Conjugate: Unconjugated
Host: Rabbit	Reactivity: human	Full name: cholinergic receptor, nicotinic, alpha 3
Isotype: IgG	GenBank: BC000513	Gene ID: 1136
Purification Method: Protein A purification	Immunogen Catalog Number: Ag0272	

Detection Antibody Information

Catalog Number: 84860-4-PBS	Clone ID: 242410B1	Conjugate: Unconjugated
Host: Rabbit	Reactivity: human	Full name: cholinergic receptor, nicotinic, alpha 3
Isotype: IgG	GenBank: BC000513	Gene ID: 1136
Purification Method: Protein A purification	Immunogen Catalog Number: Ag0272	

Applications

Tested Applications: Sandwich ELISA	Range: 1.56-100 ng/mL (Sandwich ELISA)	Recommended Dilutions: It is recommended that this reagent should be titrated in each testing system to obtain optimal results.
--	---	--

Product Information

MP01633-3 targets CHRNA3 in immunoassays as a matched antibody pair. Validated in Sandwich ELISA.

Capture antibody: CHRNA3 Recombinant antibody, PBS Only (Capture/Detector) 84860-1-PBS (242410A7). 100 µg. Concentration 1 mg/mL.

Detection antibody: CHRNA3 Recombinant antibody, PBS Only (Detector) 84860-4-PBS (242410B1). 100 µg. Concentration 1 mg/mL.

Unconjugated rabbit recombinant monoclonal antibody pair in PBS only storage buffer at a concentration of 1 mg/mL, ready for conjugation. Created using Proteintech's proprietary in-house recombinant technology. Recombinant production enables unrivalled batch-to-batch consistency, easy scale-up, and future security of supply.

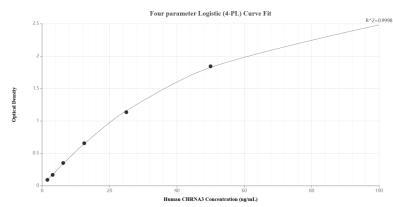
Matched antibody pairs are designed for use in a variety of assays and platforms that require matched antibody pairs.

Antibody use should be optimized for each application and assay.

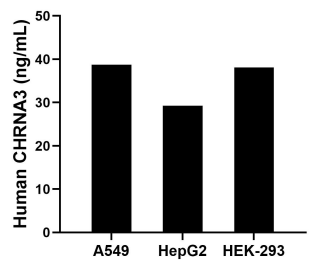
Storage

Storage:
Store at -80°C.
The product is shipped with ice packs. Upon receipt, store it immediately at -80°C
Storage buffer:
PBS only

Selected Validation Data



Sandwich ELISA standard curve of MP01633-3, Human CHRNA3 Recombinant Matched Antibody Pair - PBS only. 84860-1-PBS was coated to a plate as the capture antibody and incubated with serial dilutions of standard Ag0272. 84860-4-PBS was HRP conjugated as the detection antibody. Range: 1.56-100 ng/mL.



The mean CHRNA3 concentration was determined to be 38.77 ng/mL in A549 cell extract based on a 1.50 mg/mL extract load, 29.25 ng/mL in HepG2 cell extract based on a 1.00 mg/mL extract load and 38.10 ng/mL in HEK-293 cell extract based on a 2.90 mg/mL extract load.