

NUAK2 Recombinant Matched Antibody Pair, PBS Only

Catalog Number: **MP01626-3**

Capture Antibody Information

Catalog Number:
84849-2-PBS
Host:
Rabbit
Isotype:
IgG
Purification Method:
Protein A purification

Clone ID:
242220B3
Reactivity:
human
GenBank:
NM_030952
Immunogen Catalog Number:
Ag35302

Conjugate:
Unconjugated
Full name:
NUAK family, SNF1-like kinase, 2
Gene ID:
81788

Detection Antibody Information

Catalog Number:
84849-4-PBS
Host:
Rabbit
Isotype:
IgG
Purification Method:
Protein A purification

Clone ID:
242220C1
Reactivity:
human
GenBank:
NM_030952
Immunogen Catalog Number:
Ag35302

Conjugate:
Unconjugated
Full name:
NUAK family, SNF1-like kinase, 2
Gene ID:
81788

Applications

Tested Applications:
Sandwich ELISA

Range:
0.195–12.5 ng/mL (Sandwich ELISA)

Recommended Dilutions:
It is recommended that this reagent should be titrated in each testing system to obtain optimal results.

Product Information

MP01626-3 targets NUAK2 in immunoassays as a matched antibody pair. Validated in Sandwich ELISA.

Capture antibody: NUAK2 Recombinant antibody, PBS Only (Capture) 84849-2-PBS (242220B3). 100 µg. Concentration 1 mg/mL.

Detection antibody: NUAK2 Recombinant antibody, PBS Only (Detector) 84849-4-PBS (242220C1). 100 µg. Concentration 1 mg/mL.

Unconjugated rabbit recombinant monoclonal antibody pair in PBS only storage buffer at a concentration of 1 mg/mL, ready for conjugation. Created using Proteintech's proprietary in-house recombinant technology. Recombinant production enables unrivalled batch-to-batch consistency, easy scale-up, and future security of supply.

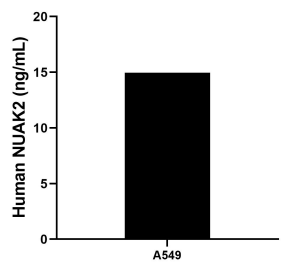
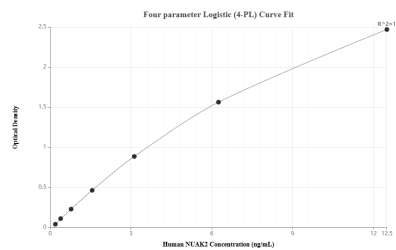
Matched antibody pairs are designed for use in a variety of assays and platforms that require matched antibody pairs.

Antibody use should be optimized for each application and assay.

Storage

Storage:
Store at -80°C.
The product is shipped with ice packs. Upon receipt, store it immediately at -80°C
Storage buffer:
PBS only

Selected Validation Data



Sandwich ELISA standard curve of MP01626-3, Human NUA2 Recombinant Matched Antibody Pair - PBS only. 84849-2-PBS was coated to a plate as the capture antibody and incubated with serial dilutions of standard Ag35302. 84849-4-PBS was HRP conjugated as the detection antibody. Range: 0.195-12.5 ng/mL

The mean NUA2 concentration was determined to be 14.95 ng/mL in A549 cell extract based on a 2.3 mg/mL extract load.