

For Research Use Only

AMACR/p504S Recombinant Matched Antibody Pair, PBS Only

Catalog Number: **MP01623-4**

Capture Antibody Information

Catalog Number: 84891-7-PBS	Clone ID: 250503E11	Conjugate: Unconjugated
Host: Rabbit	Reactivity: human	Full name: alpha-methylacyl-CoA racemase
Isotype: IgG	GenBank: NM_014324.6	Gene ID: 23600
Purification Method: Protein A purification	Immunogen Catalog Number: Eg4005	

Detection Antibody Information

Catalog Number: 84891-6-PBS	Clone ID: 250503E1	Conjugate: Unconjugated
Host: Rabbit	Reactivity: human	Full name: alpha-methylacyl-CoA racemase
Isotype: IgG	GenBank: NM_014324.6	Gene ID: 23600
Purification Method: Protein A purification	Immunogen Catalog Number: Eg4005	

Applications

Tested Applications: Sandwich ELISA	Range: 62.5-4000 pg/mL (Sandwich ELISA)	Recommended Dilutions: It is recommended that this reagent should be titrated in each testing system to obtain optimal results.
---	---	---

Product Information

MP01623-4 targets AMACR/p504S in immunoassays as a matched antibody pair. Validated in Sandwich ELISA.

Capture antibody: AMACR Recombinant antibody, PBS Only (Capture) 84891-7-PBS (250503E11). 100 µg. Concentration 1 mg/mL.

Detection antibody: AMACR Recombinant antibody, PBS Only (Detector) 84891-6-PBS (250503E1). 100 µg. Concentration 1 mg/mL.

Unconjugated rabbit recombinant monoclonal antibody pair in PBS only storage buffer at a concentration of 1 mg/mL, ready for conjugation. Created using Proteintech's proprietary in-house recombinant technology. Recombinant production enables unrivalled batch-to-batch consistency, easy scale-up, and future security of supply.

Matched antibody pairs are designed for use in a variety of assays and platforms that require matched antibody pairs.

Antibody use should be optimized for each application and assay.

Storage

Storage:
Store at -80°C.
The product is shipped with ice packs. Upon receipt, store it immediately at -80°C
Storage buffer:
PBS only

For technical support and original validation data for this product please contact:

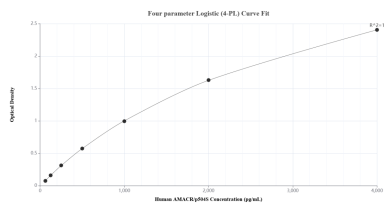
T: 4006900926

E: Proteintech-CN@ptglab.com

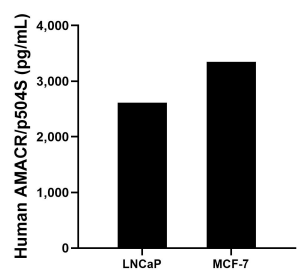
W: ptgcn.com

This product is exclusively available under Proteintech Group brand and is not available to purchase from any other manufacturer.

Selected Validation Data



Sandwich ELISA standard curve of MP01623-4, Human AMACR/p504S Recombinant Matched Antibody Pair - PBS only. 84891-7-PBS was coated to a plate as the capture antibody and incubated with serial dilutions of standard Eg4005. 84891-6-PBS was HRP conjugated as the detection antibody. Range: 62.5-4000 pg/mL



The mean AMACR/p504S concentration was determined to be 2,611.4 pg/mL in LNCaP cell extract based on a 2.6 mg/mL extract load and 3,344.8 pg/mL in MCF-7 cell extract based on a 1.3 mg/mL extract load.