

AMACR/p504S Recombinant Matched Antibody Pair, PBS Only

Catalog Number: **MP01623-3**

Capture Antibody Information

Catalog Number:
84891-4-PBS
Host:
Rabbit
Isotype:
IgG
Purification Method:
Protein A purification

Clone ID:
242456G11
Reactivity:
human
GenBank:
BC009471
Immunogen Catalog Number:
Ag8720

Conjugate:
Unconjugated
Full name:
alpha-methylacyl-CoA racemase
Gene ID:
23600

Detection Antibody Information

Catalog Number:
84891-3-PBS
Host:
Rabbit
Isotype:
IgG
Purification Method:
Protein A purification

Clone ID:
242456G6
Reactivity:
human
GenBank:
BC009471
Immunogen Catalog Number:
Ag8720

Conjugate:
Unconjugated
Full name:
alpha-methylacyl-CoA racemase
Gene ID:
23600

Applications

Tested Applications:
Sandwich ELISA

Range:
7.81-500 ng/mL (Sandwich ELISA)

Recommended Dilutions:
It is recommended that this reagent should be titrated in each testing system to obtain optimal results.

Product Information

MP01623-3 targets AMACR/p504S in immunoassays as a matched antibody pair. Validated in Sandwich ELISA.

Capture antibody: AMACR/p504S Recombinant antibody, PBS Only (Capture) 84891-4-PBS (242456G11). 100 µg. Concentration 1 mg/mL.

Detection antibody: AMACR/p504S Recombinant antibody, PBS Only (Detector) 84891-3-PBS (242456G6). 100 µg. Concentration 1 mg/mL.

Unconjugated rabbit recombinant monoclonal antibody pair in PBS only storage buffer at a concentration of 1 mg/mL, ready for conjugation. Created using Proteintech's proprietary in-house recombinant technology. Recombinant production enables unrivalled batch-to-batch consistency, easy scale-up, and future security of supply.

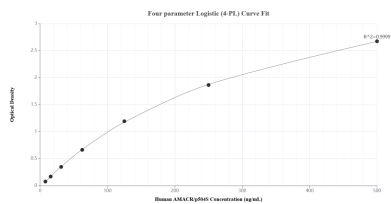
Matched antibody pairs are designed for use in a variety of assays and platforms that require matched antibody pairs.

Antibody use should be optimized for each application and assay.

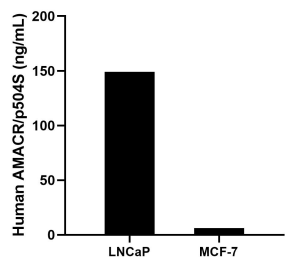
Storage

Storage:
Store at -80°C.
The product is shipped with ice packs. Upon receipt, store it immediately at -80°C
Storage buffer:
PBS only

Selected Validation Data



Sandwich ELISA standard curve of MP01623-3, Human AMACR/p504S Recombinant Matched Antibody Pair - PBS only. 84891-4-PBS was coated to a plate as the capture antibody and incubated with serial dilutions of standard Ag8720. 84891-3-PBS was HRP conjugated as the detection antibody. Range: 7.81-500 ng/mL



The mean AMACR/p504S concentration was determined to be 149.00 ng/mL in LNCaP cell extract based on a 2.00 mg/mL extract load and 6.31 ng/mL in MCF-7 cell extract based on a 1.20 mg/mL extract load.