

# ALDH7A1 Recombinant Matched Antibody Pair, PBS Only

Catalog Number: **MP01614-2**

## Capture Antibody Information

Catalog Number:  
84871-2-PBS  
Host:  
Rabbit  
Isotype:  
IgG  
Purification Method:  
Protein A purification

Clone ID:  
242363B12  
Reactivity:  
human  
GenBank:  
BC002515  
Immunogen Catalog Number:  
Ag0383

Conjugate:  
Unconjugated  
Full name:  
aldehyde dehydrogenase 7 family,  
member A1  
Gene ID:  
501

## Detection Antibody Information

Catalog Number:  
84871-3-PBS  
Host:  
Rabbit  
Isotype:  
IgG  
Purification Method:  
Protein A purification

Clone ID:  
242363B6  
Reactivity:  
human  
GenBank:  
BC002515  
Immunogen Catalog Number:  
Ag0383

Conjugate:  
Unconjugated  
Full name:  
aldehyde dehydrogenase 7 family,  
member A1  
Gene ID:  
501

## Applications

Tested Applications:  
Cytometric bead array

Range:  
0.781-100 ng/mL (Cytometric Bead Array)

Recommended Dilutions:  
It is recommended that this reagent should be titrated in each testing system to obtain optimal results.

## Product Information

MP01614-2 targets ALDH7A1 in immunoassays as a matched antibody pair. Validated in Cytometric bead array.

Capture antibody: ALDH7A1 Recombinant antibody, PBS Only (Capture) 84871-2-PBS (242363B12). 100 µg. Concentration 1 mg/mL.

Detection antibody: ALDH7A1 Recombinant antibody, PBS Only (Detector) 84871-3-PBS (242363B6). 100 µg. Concentration 1 mg/mL.

Unconjugated rabbit recombinant monoclonal antibody pair in PBS only storage buffer at a concentration of 1 mg/mL, ready for conjugation. Created using Proteintech's proprietary in-house recombinant technology. Recombinant production enables unrivalled batch-to-batch consistency, easy scale-up, and future security of supply.

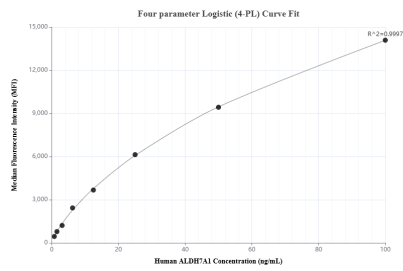
Matched antibody pairs are designed for use in a variety of assays and platforms that require matched antibody pairs.

Antibody use should be optimized for each application and assay.

## Storage

Storage:  
Store at -80°C.  
The product is shipped with ice packs. Upon receipt, store it immediately at -80°C  
Storage buffer:  
PBS only

# Selected Validation Data



Cytometric bead array standard curve of MP01614-2, ALDH7A1 Recombinant Matched Antibody Pair, PBS Only. Capture antibody: 84871-2-PBS. Detection antibody: 84871-3-PBS. Standard: Ag0383. Range: 0.781-100 ng/mL.