

# ALDH7A1 Recombinant Matched Antibody Pair, PBS Only

Catalog Number: **MP01614-1**

## Capture Antibody Information

**Catalog Number:**  
84871-2-PBS

**Host:**  
Rabbit

**Isotype:**  
IgG

**Purification Method:**  
Protein A purification

**Clone ID:**  
242363B12

**Reactivity:**  
human

**GenBank:**  
BC002515

**Immunogen Catalog Number:**  
Ag0383

**Conjugate:**  
Unconjugated

**Full name:**  
aldehyde dehydrogenase 7 family, member A1

**Gene ID:**  
501

## Detection Antibody Information

**Catalog Number:**  
84871-1-PBS

**Host:**  
Rabbit

**Isotype:**  
IgG

**Purification Method:**  
Protein A purification

**Clone ID:**  
242363B10

**Reactivity:**  
human

**GenBank:**  
BC002515

**Immunogen Catalog Number:**  
Ag0383

**Conjugate:**  
Unconjugated

**Full name:**  
aldehyde dehydrogenase 7 family, member A1

**Gene ID:**  
501

## Applications

**Tested Applications:**  
Cytometric bead array

**Range:**  
0.781-100 ng/mL (Cytometric Bead Array)

**Recommended Dilutions:**  
It is recommended that this reagent should be titrated in each testing system to obtain optimal results.

## Product Information

MP01614-1 targets ALDH7A1 in immunoassays as a matched antibody pair. Validated in Cytometric bead array.

Capture antibody: ALDH7A1 Recombinant antibody, PBS Only (Capture) 84871-2-PBS (242363B12). 100 µg. Concentration 1 mg/mL.

Detection antibody: ALDH7A1 Recombinant antibody, PBS Only (Detector) 84871-1-PBS (242363B10). 100 µg. Concentration 1 mg/mL.

Unconjugated rabbit recombinant monoclonal antibody pair in PBS only storage buffer at a concentration of 1 mg/mL, ready for conjugation. Created using Proteintech's proprietary in-house recombinant technology. Recombinant production enables unrivalled batch-to-batch consistency, easy scale-up, and future security of supply.

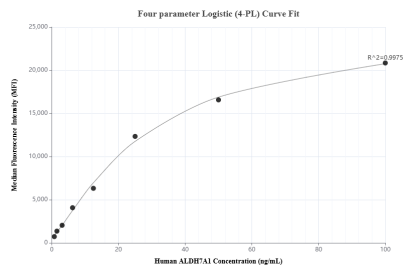
Matched antibody pairs are designed for use in a variety of assays and platforms that require matched antibody pairs.

Antibody use should be optimized for each application and assay.

## Storage

**Storage:**  
Store at -80°C.  
**The product is shipped with ice packs. Upon receipt, store it immediately at -80°C**  
**Storage buffer:**  
PBS only

# Selected Validation Data



Cytometric bead array standard curve of MP01614-1, ALDH7A1 Recombinant Matched Antibody Pair, PBS Only. Capture antibody: 84871-2-PBS. Detection antibody: 84871-1-PBS. Standard: Ag0383. Range: 0.781-100 ng/mL.