

TP53BP1 Recombinant Matched Antibody Pair, PBS Only

Catalog Number: **MP01611-1**

Capture Antibody Information

Catalog Number:

83809-2-PBS

Host:

Rabbit

Isotype:

IgG

Purification Method:

Protein A purification

Clone ID:

240638C10

Reactivity:

human

GenBank:

NM_005657

Conjugate:

Unconjugated

Full name:

tumor protein p53 binding protein 1

Gene ID:

7158

Detection Antibody Information

Catalog Number:

83809-3-PBS

Host:

Rabbit

Isotype:

IgG

Purification Method:

Protein A purification

Clone ID:

240638G10

Reactivity:

human

GenBank:

NM_005657

Conjugate:

Unconjugated

Full name:

tumor protein p53 binding protein 1

Gene ID:

7158

Applications

Tested Applications:

Sandwich ELISA

Range:

1.56-50 ng/mL (Sandwich ELISA)

Recommended Dilutions:

It is recommended that this reagent should be titrated in each testing system to obtain optimal results.

Product Information

MP01611-1 targets TP53BP1 in immunoassays as a matched antibody pair. Validated in Sandwich ELISA.

Capture antibody: TP53BP1-Specific Recombinant antibody, PBS Only (Capture) 83809-2-PBS (240638C10). 100 µg. Concentration 1 mg/mL.

Detection antibody: TP53BP1-Specific Recombinant antibody, PBS Only (Detector) 83809-3-PBS (240638G10). 100 µg. Concentration 1 mg/mL.

Unconjugated rabbit recombinant monoclonal antibody pair in PBS only storage buffer at a concentration of 1 mg/mL, ready for conjugation. Created using Proteintech's proprietary in-house recombinant technology. Recombinant production enables unrivalled batch-to-batch consistency, easy scale-up, and future security of supply.

Matched antibody pairs are designed for use in a variety of assays and platforms that require matched antibody pairs.

Antibody use should be optimized for each application and assay.

Storage

Storage:

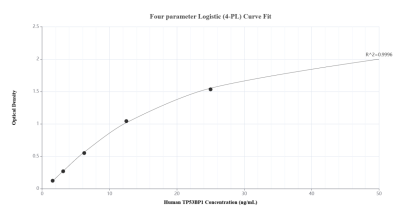
Store at -80°C.

The product is shipped with ice packs. Upon receipt, store it immediately at -80°C

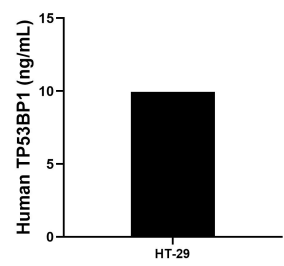
Storage buffer:

PBS only

Selected Validation Data



Sandwich ELISA standard curve of MP01611-1, Human TP53BP1 Recombinant Matched Antibody Pair - PBS only. 83809-2-PBS was coated to a plate as the capture antibody and incubated with serial dilutions of standard SY00622. 83809-3-PBS was HRP conjugated as the detection antibody. Range: 1.56-50 ng/mL



The mean TP53BP1 concentration was determined to be 9.94 ng/mL in HT-29 cell extract based on a 7.70 mg/mL extract load.