

# Mouse P62/SQSTM1 Recombinant Matched Antibody Pair, PBS Only

Catalog Number: **MP01608-2**

## Capture Antibody Information

**Catalog Number:**  
84826-1-PBS  
**Host:**  
Rabbit  
**Isotype:**  
IgG  
**Purification Method:**  
Protein A purification

**Clone ID:**  
241992C4  
**Reactivity:**  
human, mouse, rat  
**GenBank:**  
NM\_011018  
**Immunogen Catalog Number:**  
Ag35064

**Conjugate:**  
Unconjugated  
**Full name:**  
sequestosome 1  
**Gene ID:**  
18412

## Detection Antibody Information

**Catalog Number:**  
84826-2-PBS  
**Host:**  
Rabbit  
**Isotype:**  
IgG  
**Purification Method:**  
Protein A purification

**Clone ID:**  
241992G4  
**Reactivity:**  
mouse  
**GenBank:**  
NM\_011018  
**Immunogen Catalog Number:**  
Ag35064

**Conjugate:**  
Unconjugated  
**Full name:**  
sequestosome 1  
**Gene ID:**  
18412

## Applications

**Tested Applications:**  
Sandwich ELISA

**Range:**  
0.781-50 ng/mL (Sandwich ELISA)

**Recommended Dilutions:**  
It is recommended that this reagent should be titrated in each testing system to obtain optimal results.

## Product Information

MP01608-2 targets P62/SQSTM1 in immunoassays as a matched antibody pair. Validated in Sandwich ELISA.

Capture antibody: Mouse P62/SQSTM1 Recombinant antibody, PBS Only (Capture/Detector) 84826-1-PBS (241992C4). 100 µg. Concentration 1 mg/mL.

Detection antibody: Mouse P62/SQSTM1 Recombinant antibody, PBS Only (Capture/Detector) 84826-2-PBS (241992G4). 100 µg. Concentration 1 mg/mL.

Unconjugated rabbit recombinant monoclonal antibody pair in PBS only storage buffer at a concentration of 1 mg/mL, ready for conjugation. Created using Proteintech's proprietary in-house recombinant technology. Recombinant production enables unrivalled batch-to-batch consistency, easy scale-up, and future security of supply.

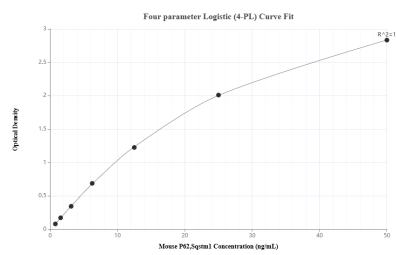
Matched antibody pairs are designed for use in a variety of assays and platforms that require matched antibody pairs.

Antibody use should be optimized for each application and assay.

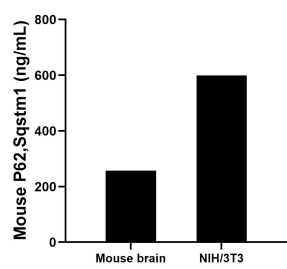
## Storage

**Storage:**  
Store at -80°C.  
**The product is shipped with ice packs. Upon receipt, store it immediately at -80°C**  
**Storage buffer:**  
PBS only

## Selected Validation Data



Sandwich ELISA standard curve of MP01608-2, Mouse P62,Sqstm1 Recombinant Matched Antibody Pair - PBS only. 84826-1-PBS was coated to a plate as the capture antibody and incubated with serial dilutions of standard Ag35064. 84826-2-PBS was HRP conjugated as the detection antibody. Range: 0.781-50 ng/mL



The mean P62,Sqstm1 concentration was determined to be 257.13 ng/mL in mouse brain tissue extract based on a 1.6 mg/mL extract load and 598.93 ng/mL in NIH/3T3 cell extract based on a 1.5 mg/mL extract load.