

Mouse FcεR1 Recombinant Matched Antibody Pair, PBS Only

Catalog Number: **MP01601-3**

Capture Antibody Information

Catalog Number:
84816-2-PBS
Host:
Rabbit
Isotype:
IgG
Purification Method:
Protein A purification

Clone ID:
242008G5
Reactivity:
mouse
GenBank:
NM_010184.2
Immunogen Catalog Number:
Eg1740

Conjugate:
Unconjugated
Full name:
Fc receptor, IgE, high affinity I, alpha polypeptide
Gene ID:
14125

Detection Antibody Information

Catalog Number:
84816-6-PBS
Host:
Rabbit
Isotype:
IgG
Purification Method:
Protein A purification

Clone ID:
242008C10
Reactivity:
mouse
GenBank:
NM_010184.2
Immunogen Catalog Number:
Eg1740

Conjugate:
Unconjugated
Full name:
Fc receptor, IgE, high affinity I, alpha polypeptide
Gene ID:
14125

Applications

Tested Applications:
Cytometric bead array

Range:
1.56-100 ng/mL (Cytometric Bead Array)

Recommended Dilutions:
It is recommended that this reagent should be titrated in each testing system to obtain optimal results.

Product Information

MP01601-3 targets FcεR1 in immunoassays as a matched antibody pair. Validated in Cytometric bead array.

Capture antibody: Mouse Fc-epsilon RI-alpha (FcεRI) Recombinant antibody, PBS Only (Capture) 84816-2-PBS (242008G5). 100 μg. Concentration 1 mg/mL.

Detection antibody: Mouse Fc-epsilon RI-alpha (FcεRI) Recombinant antibody, PBS Only (Detector) 84816-6-PBS (242008C10). 100 μg. Concentration 1 mg/mL.

Unconjugated rabbit recombinant monoclonal antibody pair in PBS only storage buffer at a concentration of 1 mg/mL, ready for conjugation. Created using Proteintech's proprietary in-house recombinant technology. Recombinant production enables unrivalled batch-to-batch consistency, easy scale-up, and future security of supply.

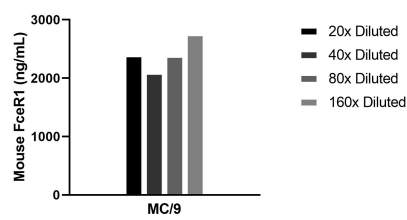
Matched antibody pairs are designed for use in a variety of assays and platforms that require matched antibody pairs.

Antibody use should be optimized for each application and assay.

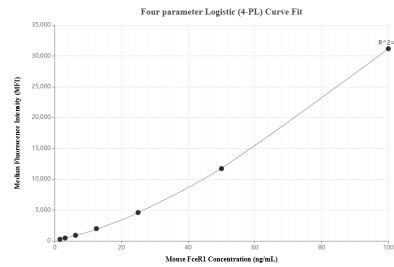
Storage

Storage:
Store at -80°C.
The product is shipped with ice packs. Upon receipt, store it immediately at -80°C
Storage buffer:
PBS only

Selected Validation Data



The mean FceR1 concentration was determined to be 2398.7 ng/mL in MC/9 cell extract based on a 3.5 mg/mL extract load.



Cytometric bead array standard curve of MP01601-3, MOUSE FceR1 Recombinant Matched Antibody Pair, PBS Only. Capture antibody: 84816-2-PBS. Detection antibody: 84816-6-PBS. Standard: Eg1740. Range: 1.56-100 ng/mL.