

LRRFIP1 Recombinant Matched Antibody Pair, PBS Only

Catalog Number: **MP01600-1**

Capture Antibody Information

Catalog Number: 84778-1-PBS	Clone ID: 242161C11	Conjugate: Unconjugated
Host: Rabbit	Reactivity: human	Full name: leucine rich repeat (in FLII) interacting protein 1
Isotype: IgG	GenBank: BC108914	Gene ID: 9208
Purification Method: Protein A purification	Immunogen Catalog Number: Ag34760	

Detection Antibody Information

Catalog Number: 84778-2-PBS	Clone ID: 242161F10	Conjugate: Unconjugated
Host: Rabbit	Reactivity: human	Full name: leucine rich repeat (in FLII) interacting protein 1
Isotype: IgG	GenBank: BC108914	Gene ID: 9208
Purification Method: Protein A purification	Immunogen Catalog Number: Ag34760	

Applications

Tested Applications: Cytometric bead array, Sandwich ELISA	Range: 0.313-40 ng/mL (Cytometric Bead Array) 78.1-2500 pg/mL (Sandwich ELISA)	Recommended Dilutions: It is recommended that this reagent should be titrated in each testing system to obtain optimal results.
--	---	---

Product Information

MP01600-1 targets LRRFIP1 in immunoassays as a matched antibody pair. Validated in Cytometric bead array, Sandwich ELISA.

Capture antibody: LRRFIP1 Recombinant antibody, PBS Only (Capture) 84778-1-PBS (242161C11). 100 µg. Concentration 1 mg/mL.

Detection antibody: LRRFIP1 Recombinant antibody, PBS Only (Detector) 84778-2-PBS (242161F10). 100 µg. Concentration 1 mg/mL.

Unconjugated rabbit recombinant monoclonal antibody pair in PBS only storage buffer at a concentration of 1 mg/mL, ready for conjugation. Created using Proteintech's proprietary in-house recombinant technology. Recombinant production enables unrivalled batch-to-batch consistency, easy scale-up, and future security of supply.

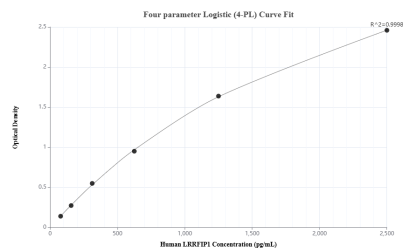
Matched antibody pairs are designed for use in a variety of assays and platforms that require matched antibody pairs.

Antibody use should be optimized for each application and assay.

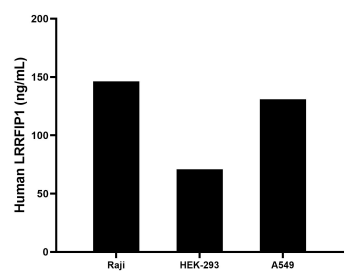
Storage

Storage:
Store at -80°C.
The product is shipped with ice packs. Upon receipt, store it immediately at -80°C
Storage buffer:
PBS only

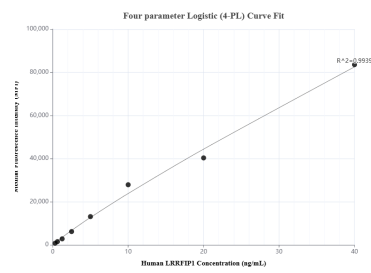
Selected Validation Data



Sandwich ELISA standard curve of MP01600-1, Human LRRFIP1 Recombinant Matched Antibody Pair - PBS only. 84778-1-PBS was coated to a plate as the capture antibody and incubated with serial dilutions of standard Ag34760. 84778-2-PBS was HRP conjugated as the detection antibody. Range: 78.1-2500 pg/mL



The mean LRRFIP1 concentration was determined to be 146.23 ng/mL in Raji cell extract based on a 1.4 mg/mL extract load, 70.95 ng/mL in HEK-293 cell extract based on a 1.2 mg/mL extract load and 131.01 ng/mL in A549 cell extract based on a 2.5 mg/mL extract load.



Cytometric bead array standard curve of MP01600-1, LRRFIP1 Recombinant Matched Antibody Pair, PBS Only. Capture antibody: 84778-1-PBS. Detection antibody: 84778-2-PBS. Standard: Ag34760. Range: 0.313-40 ng/mL